

Trusted. Tested. Tough.®

Product information presented here reflects conditions at time of publication. Consult factory regarding discrepancies or inconsistencies.



FM3561  
1225  
Supersedes  
NEW

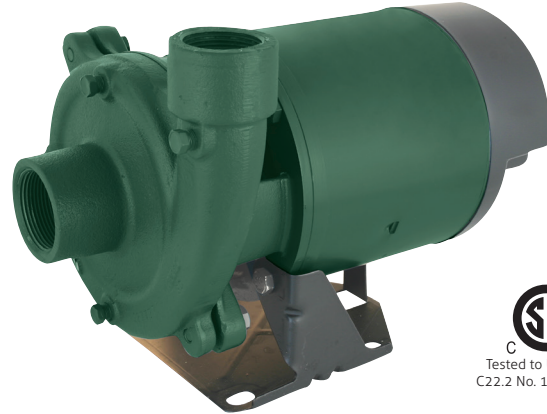
## TECHNICAL DATA SHEET

### END SUCTION CENTRIFUGAL PUMPS

Single End Stage Suction, Two Stage End Suction

#### SINGLE STAGE END SUCTION

- Heavy duty 56 frame, NEMA J, capacitor start, double ball bearing motors for continuous operation.
- Rugged volute type casing. Discharge can be rotated to any one of four positions for horizontal or vertical service line.
- Normal wearing parts are easily removed for service and replacement without disturbing the suction or discharge piping.



#### CENTRIFUGAL PUMPS, PLASTIC IMPELLERS

MODEL NO.	HP	STAGES	SUCTION LIFT FT.	CAPACITY GPM						MAX. PRESS. PSI	MAX. CASE PRESS.	MAX. LIQUID TEMP.	
				DISCHARGE PRESSURE PSI									
1 PHASE				10	15	20	25	30	35	40			
300-0006	1/3	1	5	42	34	21					27	100psig	200° F
			15	36	26								
			25	28									
301-0006	1/2	1	5	50	47	37	25				32	100psig	200° F
			15	43	40	29	9						
			25	33	30	15							
302-0006	3/4	1	5	71	62	51	36	11			38	100psig	200° F
			15	66	54	40	19						
			25	57	43	25							
303-0006	1	1	5	76	69	61	50	36	16		40	100psig	200° F
			15	73	65	54	41	24					
			25	66	57	45	29						
304-0006	1 1/2	1	5	94	88	80	70	59	44	18	44	100psig	200° F
			15	92	85	75	63	49	27				
			25	74	72	66	52	34					
305-0006	2	1	5	109	103	96	86	75	61	39	44	100psig	200° F
			15	109	103	94	82	67	45				
			25	90	89	85	71	51					

Do not exceed the maximum case pressure and maximum liquid temperature rating of the pump Suction and Discharge Tappings 1-1/2" X 1-1/4"

## TWO STAGE END SUCTION

- 56 frame, NEMA J, capacitor start, double ball bearing motor for continuous operation.
- 3/4, 1, 1-1/2, and 2 HP sizes with single phase motor.
- Rugged cast iron pump casing. Multi stage for high head.
- Normal wearing parts are easily removed for service and replacement without disturbing the suction or discharge piping.
- Thermoplastic impeller.



MODEL NO.	HP	STAGES	SUCTION LIFT FT.	CAPACITY GPM										MAX. PRESS. PSI	MAX. CASE PRESS.	MAX. LIQUID TEMP.
				DISCHARGE PRESSURE PSI												
1 PHASE				10	20	30	40	50	60	70	80	90				
NE306 306-0006	3/4	2	5	41	35	28	20							49	160psig	160° F
			15	38	32	26	13									
			25	32	29	22										
NE307 307-0006	1	2	5	45	40	35	28	20						60	160psig	160° F
			15	42	39	33	26	15								
			25	35	33	30	22									
NE308 308-0006	1-1/2	2	5	54	50	44	38	28						61	160psig	160° F
			15	48	46	42	35	23								
			25	37	35	33	28	17								
NE309 309-0006	2	2	5	55	52	47	41	34	23					67	160psig	160° F
			15	49	47	45	39	30	17							
			25	37	36	33	32	26								

Note: Do not exceed the maximum case pressure and maximum liquid temperature rating of the pump Suction and Discharge Tappings 1-1/2" X 1-1/4".



MAIL TO: P.O. BOX 16347 • Louisville, KY 40256-0347  
 SHIP TO: 3649 Cane Run Road • Louisville, KY 40211-1961  
 Tel: (502) 778-2731 • 1 (800) 928-PUMP

Trusted. Tested. Tough.®

Visit our website:  
[zoellerpumps.com](http://zoellerpumps.com)