

MAIL TO: P.O. BOX 16347 • Louisville, KY 40256-0347
SHIP TO: 3649 Cane Run Road • Louisville, KY 40211-1961
Tel: (502) 778-2731 • 1 (800) 928-PUMP

Visit our website:
zoellerpumps.com

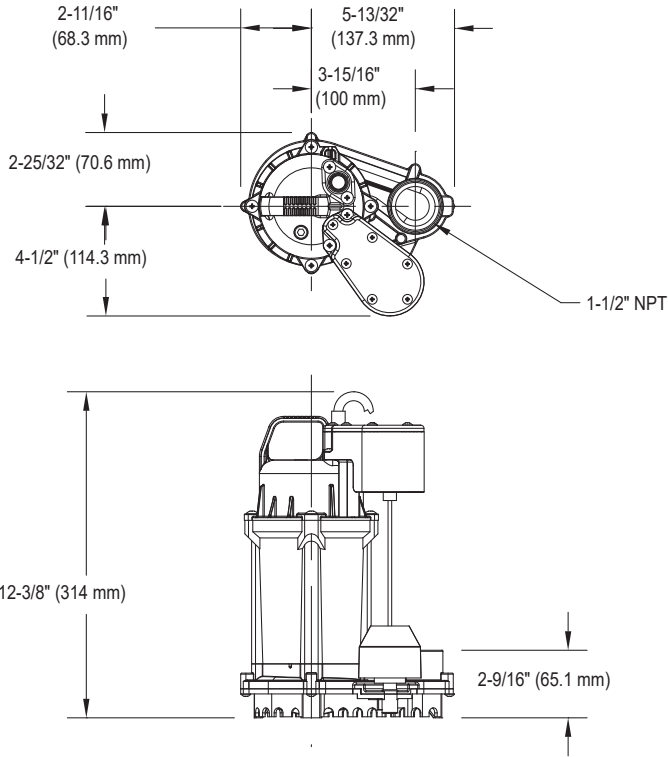
Product information presented here reflects conditions at time of publication. Consult factory regarding discrepancies or inconsistencies.

TECHNICAL DATA SHEET

MODEL 75 SUBMERSIBLE DEWATERING PUMP

PRODUCT SPECIFICATIONS

MOTOR	Horse Power	1/2
	Voltage	115
	Phase	1 Ph
	Hertz	60 Hz
	RPM	3450
	Type	Permanent split capacitor
	Insulation	Class B
	Amps	5.6
PUMP	Operation	Automatic
	Auto On/Off Points	8-1/4" (21 cm) / 2 1/2" (7 cm)
	Discharge Size	1 1/2" NPT
	Solids Handling	3/8" (9 mm) spherical solids
	Cord Length	10' (3 m) standard, 20' (6 m) available
	Cord Type	UL listed, 3-wire, grounded plug
	Max. Head	25' (7.6m)
	Max. Flow Rate	50 GPM (189 LPM)
	Max. Operating Temp.	104°F (40°C)
	Cooling	Oil filled
	Motor Protection	Auto reset thermal overload
MATERIALS	Motor Housing	Cast iron
	Pump Housing	Engineered plastic
	Base	Engineered plastic
	Upper Bearing	Ball bearing
	Lower Bearing	Ball bearing
	Mechanical Seals	Carbon and ceramic
	Impeller Type	Non-clogging vortex
	Impeller	Engineered plastic
	Hardware	Stainless steel
	Motor Shaft	SUS420J2 stainless steel
	Gasket	NBR



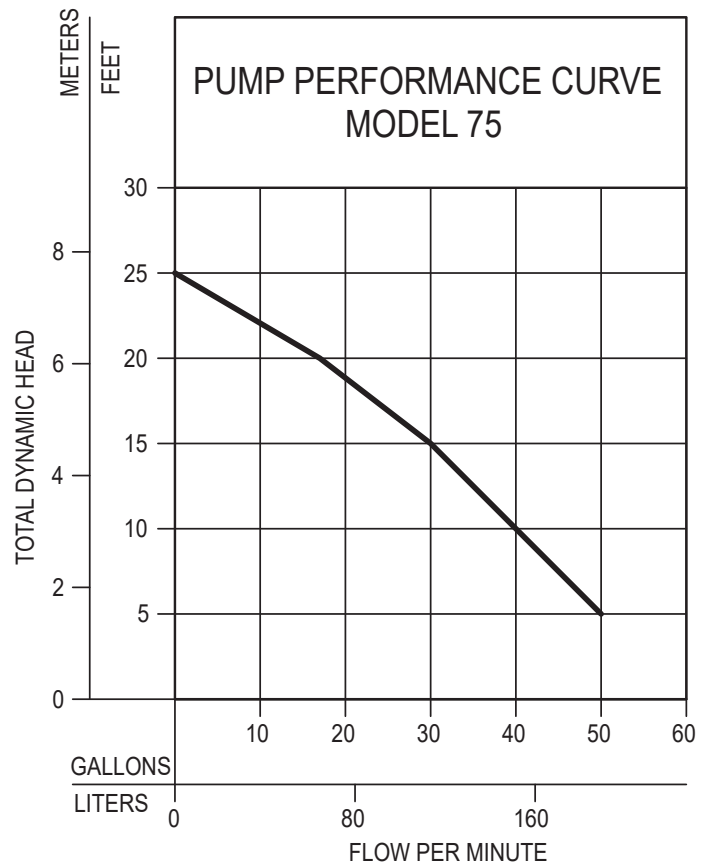
SK3053



NOTE: See model comparison chart for specific details.

TOTAL DYNAMIC HEAD FLOW PER MINUTE

MODEL		75	
Feet	Meters	Gal.	Liters
5	1.5	50	189
10	3.0	40	151
15	4.6	30	114
20	6.1	17	64
Shut-off Head:		25 ft. (7.6 m)	



153443

⚠ CAUTION

All installation of controls, protection devices and wiring should be done by a qualified licensed electrician. All electrical and safety codes should be followed including the most recent National Electrical Code (NEC) and the Occupational Safety and Health Act (OSHA).