

## On The Shelf Grinder Packages

Standardized sewage grinder package systems that include the pump, panel, floats and basin assembly required to install a basin assembly.

- Dual voltage 200-230 V, 1 Phase 2 HP grinder pump, model WDH820 or EI820
- 20' Power cords
- Corrosion resistant powder coated epoxy finish
- Oil-Filled - hermetically sealed motor
- Hardened 440C stainless steel cutter and disc
- Vortex impeller – engineered thermoplastic
- Solid fiberglass cover
- Anti-flotation device
- 2" Sch 80 discharge piping
- 2" Ball and check valve installed
- 4" Inlet pipe seal loose for field install
- Control or Alarm Panel Included



Duplex  
36 x 48, 36 x 72



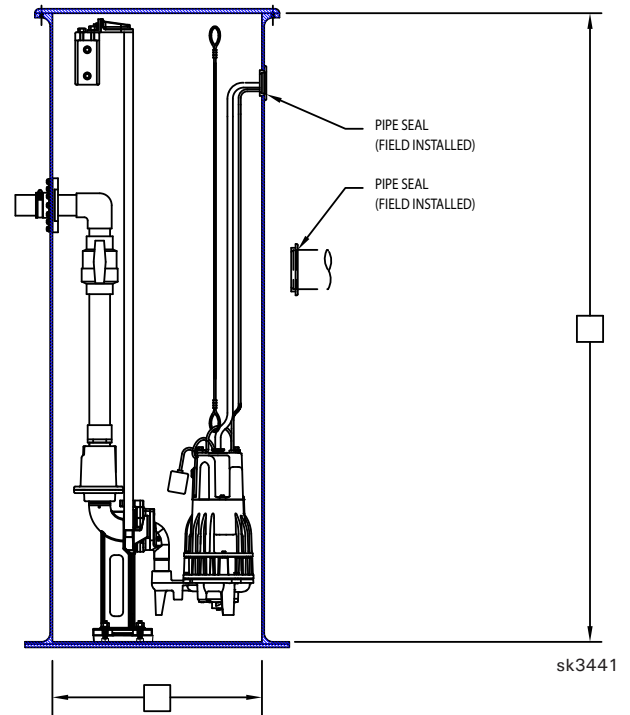
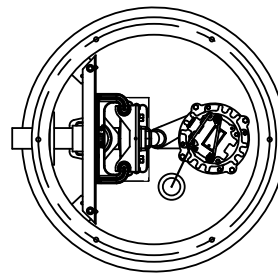
Simplex  
24 x 84, 30 x 84



820-0004



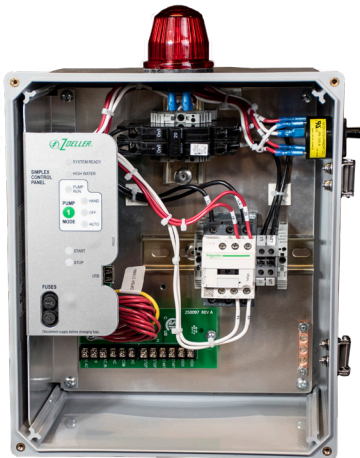
## WDH820 Basin Assembly



### WDH820 Package Systems:

#### A-Pak Outdoor Alarm System Features

- NEMA 4X Outdoor use per UL 864 for US and Canada
- Alarm system (horn & light) operates to warn of a high-water condition
- Horn is rated 82 decibels at 10' (3 m)
- Auxiliary dry contacts for high level alarm, 5 Amps
- Operates on separate circuit from pump, 115 VAC
- Alarm test and horn silence switch with automatic reset
- 20' (6 m) float switch, 6' (2 m) power cord, watertight cord connectors



### E1820 Package Systems:

#### Pivot Series Control Panel Features

- NEMA 4X Outdoor use per UL 864 for US and Canada
- Alarm system (horn & light) operates to warn of a high-water condition
- Audible alarm buzzer rated 95 db at 2' (0.6 m)
- SILENCE/RESET/TEST toggle switch with weatherproof rubber boot
- HAND/OFF/AUTO control are included for each pump
- Auxiliary output dry contacts
- RED/AMBER/GREEN LEDs for float switch indicators, Pump Run, High Water, System Ready, and HOA functions

Pump Model	Simplex/Duplex	Basin		Discharge Depth	Cord Lengths	Part Number
		Diameter	Depth			
WDH820	Simplex	24"	48"	12"	20'	922-0094
		30"	48"	12"	20'	922-0096
E1820	Simplex	24"	60"	24"	20'	922-0066
		24"	72"	24"	20'	922-0067
		24"	84"	48"	20'	922-0095
		30"	84"	48"	20'	922-0097
	Duplex	36"	48"	19"	20'	922-0098
		36"	72"	36"	20'	922-0099

FM3496  
0524  
Supersedes  
NEW