

Product information presented here reflects conditions at time of publication. Consult factory regarding discrepancies or inconsistencies.



MAIL TO: P.O. BOX 16347 • Louisville, KY 40256-0347  
 SHIP TO: 3649 Cane Run Road • Louisville, KY 40211-1961  
 TEL: (502) 778-2731 • 1 (800) 928-PUMP • FAX: (502) 774-3624

Visit our website:  
 zoellerpumps.com

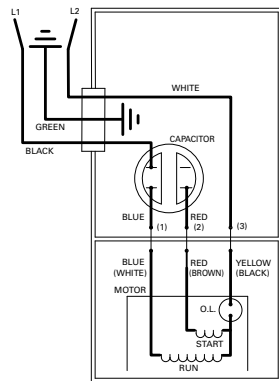
## REPLACEMENT PARTS LIST FOR MODELS:

- E4405 NONAUTOMATIC/DOUBLE SEAL/230V/1PH
- WD4405 AUTOMATIC W/WIRED IN FLOAT SWITCH/DOUBLE SEAL/230V/1PH
- XE4405 NONAUTOMATIC/REMOTE PILOT/ DOUBLE SEAL/230V/1PH
- I4405 NONAUTOMATIC/DOUBLE SEAL/200V/1PH
- J4405 NONAUTOMATIC/DOUBLE SEAL/200V/3PH
- F4405 NONAUTOMATIC/DOUBLE SEAL/230V/3PH
- G4405 NONAUTOMATIC/DOUBLE SEAL/460V/3PH
- BA4405 NONAUTOMATIC/DOUBLE SEAL/575V/3PH

Consult factory for all other models.

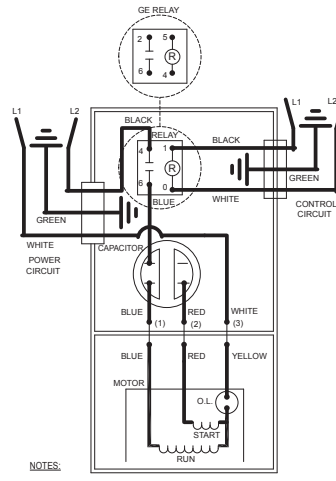
**TO ORDER REPLACEMENT PARTS:  
 PLEASE FURNISH THE FOLLOWING INFORMATION:**

- Model number
- Part number of pump
- Part number and description of part



002397

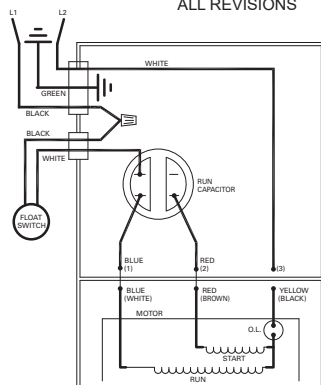
WIRING DIAGRAM FOR MODELS  
 E4405 AND I4405  
 ALL REVISIONS



NOTES:  
 INSULATORS REQUIRED ON GE RELAY TERMINALS 2 & 5;  
 OMRON RELAY TERMINALS 1 & 4.

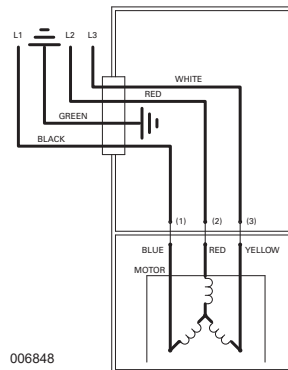
004279

WIRING DIAGRAM FOR MODELS  
 XE4405  
 ALL REVISIONS



011835

WIRING DIAGRAM FOR MODELS  
 WD4405  
 ALL REVISIONS



006848

WIRING DIAGRAM FOR MODELS  
 J4405, F4405, G4405 AND BA4405  
 ALL REVISIONS

# REPLACEMENT PARTS LIST FOR MODEL "E4405"

See back page for illustration.

REF NO.	DESCRIPTION	QTY	NOTES	MODELS:				
				E4405-A	E4405-B	E4405-C	E4405-D	E4405-E
				1/94 thru 10/97	11/97 thru 6/98	7/98 thru 4/03	5/03 thru 5/10	6/10 thru Current
1	COVER & CORD ASM.	1	3	154791	154791	154791	154791	154791
2	BOLT, EYE	1		005926	005926	N/A	N/A	N/A
3	COVER-MACH.	1	3	005864	005864	004372	014150	014150
4	• GASKET,CASE/COVER	1		001011	001011	001011	001011	001011
5	RELAY, 230V	0		N/A	N/A	N/A	N/A	N/A
6	• WIRE PKG (5) WIRES 1.5/2 HP	1		004751	004751	004751	004751	004751
7	CAPACITOR & CLAMP ASM.	1		002381	010666	010666	010666	010666
8	HOUSING, MTR. & STR.	1	1 & 2	006097	006097	006097	006097	018909
9	BEARING, SLEEVE	1		001012	001012	001012	001012	N/A
	BEARING, RADIAL			N/A	N/A	N/A	N/A	006703
10	• PLUG, TEST-WHITE	3		034090	034090	034090	034090	034090
11	• SEAL, THRU WALL TERM.	3		003402	003402	003402	003402	003402
12	ROTOR & BRG.	1	2	012192	012192	012192	012192	150883
13	• BEARING, RADIAL	1		001013	001013	001013	001013	010069
14	• SEAL, MTR HSG.	2		001014	001014	001014	001014	001014
15	• OIL, DIELECTRIC	1		003168	003168	003168	003168	014118
16	ADAPTER-MACH.	1		008862	008862	008862	008862	008862
17	• WASHER, SEAL LOCATING & SNAP RING	1		011057	011057	011057	011057	011057
18	• SEAL, SHAFT	2		002430	002430	002430	002430	002430
19	ADAPTER-MACH. LOWER	1		008833	008833	008833	008833	008833
20	IMPELLER ASM.	1		007671	007671	007671	007671	007671
21	• KEY, WOODRUFF #404	1		006841	006841	006841	006841	006841
22	• WASHER, 7/16 STD FLAT SS	1		006847	006847	006847	006847	006847
23	• NUT, 7/16-20 SS HEX	1		006846	006846	006846	006846	006846
24	HOUSING, PUMP-MACH.	1		005711	005711	011784	011784	011784
25	CORD TERM. & SEAL POWER	1	3	154792	154792	154792	154792	154792
26	• SEAL, CORD-ASM. & STR. RLF.	1	3	004375	004375	004375	015634	015634
27	CLAMP, STRAIN RELIEF	1		013764	013764	013764	013764	013764
28	CLAMP, #6 AUTO-SS	0		N/A	N/A	N/A	N/A	N/A
29	CORD, TERM. & SEAL CONTROL	0		N/A	N/A	N/A	N/A	N/A
30	• SEAL, CORD-ASM & STR. RLF. CONTROL CORD	0		N/A	N/A	N/A	N/A	N/A
31	CLAMP, STR. RLF.	0		N/A	N/A	N/A	N/A	N/A
32	• SCREW, #6-32X.25 RHM SL TC STLGR.	3		001877	001877	001877	001877	001877
33	SWITCH, FLT-TERM. & SEAL	0		N/A	N/A	N/A	N/A	N/A
34	SEAL, CORD-ASM. & STRAIN RELIEF	0		N/A	N/A	N/A	N/A	N/A
35	CONNECTOR, WIRENUT	0		N/A	N/A	N/A	N/A	N/A
36	• SCREW, .25-20X.75 HHM-SS	4		001916	001916	001916	001916	001916
37	• SCREW, .25-20X1" HHM-SS	4		007790	007790	007790	007790	007790
38	• SCREW, .313-18 X 1"HH CAP-SS	10		002608	002608	002608	002608	002608
39	• WASHER, LOCK SS .312 ID	2		N/A	N/A	006402	006402	006402
40	BRACKET, LIFTING	1		N/A	N/A	010589	016801	016801
41	RESISTOR ASSEMBLY	0		N/A	N/A	N/A	N/A	N/A
42	SENSOR WIRES	0		N/A	N/A	N/A	N/A	N/A
43	SENSOR CORDAGE TERM. & SEAL	0		N/A	N/A	N/A	N/A	N/A
44	SEAL, CORD-ASM. STR. RLF.	0		N/A	N/A	N/A	N/A	N/A
45	• WASHER, FLAT SS	2		N/A	N/A	N/A	008773	008773
▣	REBUILD KIT	1		012196	011334	012380	016805	150994

• Items included in Rebuild Kit.

▣ Not Shown in Illustration.

## NOTES:

- 1) Mtr. Hsg., Brg., Stator & Term (Item 8) are preassembled at the factory and must be replaced as a unit. Stator is permanently attached to the Motor Housing. Plug (Item 10); Seal, Thru Wall Term. (Item 11) and Bearing - Upper (Item 9) are replaceable.
- 2) When ordering Motor Housing, Bearing, Stator and Term. (item 8); or Rotor and Bearing (Item 12), specify either GE or Emerson motor.
- 3) If an "X" follows Model No., or Date Mfg. on brass I.D. tag, consult factory for ordering of this part.
- 4) See FM0160 Parts Price Sheet for listing of parts prices.

# REPLACEMENT PARTS LIST FOR MODEL "I4405"

See back page for illustration.

REF NO.	DESCRIPTION	QTY	NOTES	MODELS:			
				I4405-A	I4405-B	I4405-C	I4405-D
				2/89 thru 6/98	7/98 thru 4/03	5/03 thru 5/10	6/10 thru Current
1	COVER & CORD ASM.	1	3	012191	012468	014159	014159
2	BOLT, EYE	1		005926	N/A	N/A	N/A
3	COVER-MACH.	1	3	005864	004372	014150	014150
4	• GASKET,CASE/COVER	1		001011	001011	001011	001011
5	RELAY, 230V	0		N/A	N/A	N/A	N/A
6	• WIRE PKG (5) WIRES 1.5/2 HP	1		004751	004751	004751	004751
7	CAPACITOR & CLAMP ASM.	1		010666	010666	010666	010666
8	HOUSING, MTR. & STR.	1	1 & 2	007808	007808	007808	150961
9	BEARING, SLEEVE	1		001012	001012	001012	N/A
	BEARING, RADIAL			N/A	N/A	N/A	006703
10	• PLUG, TEST-WHITE	3		034090	034090	034090	034090
11	• SEAL, THRU WALL TERM.	3		003402	003402	003402	003402
12	ROTOR & BRG.	1	2	012192	012192	012192	150885
13	• BEARING, RADIAL	1		001013	001013	001013	010069
14	• SEAL, MTR HSG.	2		001014	001014	001014	001014
15	• OIL, DIELECTRIC	1		003168	003168	003168	014118
16	ADAPTER-MACH.	1		008862	008862	008862	008862
17	• WASHER, SEAL LOCATING & SNAP RING	1		011057	011057	011057	011057
18	• SEAL, SHAFT	2		002430	002430	002430	002430
19	ADAPTER-MACH. LOWER	1		008833	008833	008833	008833
20	IMPELLER ASM.	1		007671	007671	007671	007671
21	• KEY, WOODRUFF #404	1		006841	006841	006841	006841
22	• WASHER, 7/16 STD FLAT SS	1		006847	006847	006847	006847
23	• NUT, 7/16-20 SS HEX	1		006846	006846	006846	006846
24	HOUSING, PUMP-MACH.	1		005711	011784	011784	011784
25	CORD TERM. & SEAL POWER	1	3	009685	009685	014173	014173
26	• SEAL, CORD-ASM. & STR. RLF.	1	3	004375	004375	015634	015634
27	CLAMP, STRAIN RELIEF	1		N/A	N/A	013764	013764
28	CLAMP, #6 AUTO-SS	0		N/A	N/A	N/A	N/A
29	CORD, TERM. & SEAL CONTROL	0		N/A	N/A	N/A	N/A
30	• SEAL, CORD-ASM & STR. RLF. CONTROL CORD	0		N/A	N/A	N/A	N/A
31	CLAMP, STR. RLF.	0		N/A	N/A	N/A	N/A
32	• SCREW, #6-32X.25 RHM SL TC STLGR.	3		001877	001877	001877	001877
33	SWITCH, FLT-TERM. & SEAL	0		N/A	N/A	N/A	N/A
34	SEAL, CORD-ASM. & STRAIN RELIEF	0		N/A	N/A	N/A	N/A
35	CONNECTOR, WIRENUT	0		N/A	N/A	N/A	N/A
36	• SCREW, .25-20X.75 HHM-SS	4		001916	001916	001916	001916
37	• SCREW, .25-20X1" HHM-SS	4		007790	007790	007790	007790
38	• SCREW, .313-18 X 1"HH CAP-SS	10		002608	002608	002608	002608
39	• WASHER, LOCK SS .312 ID	2		N/A	006402	006402	006402
40	BRACKET, LIFTING	1		N/A	010589	016801	016801
41	RESISTOR ASSEMBLY	0		N/A	N/A	N/A	N/A
42	SENSOR WIRES	0		N/A	N/A	N/A	N/A
43	SENSOR CORDAGE TERM. & SEAL	0		N/A	N/A	N/A	N/A
44	SEAL, CORD-ASM. STR. RLF.	0		N/A	N/A	N/A	N/A
45	• WASHER, FLAT SS	2		N/A	N/A	008773	008773
▣	REBUILD KIT	1		012196	012380	016805	150994

• Items included in Rebuild Kit.

▣ Not Shown in Illustration.

## NOTES:

- 1) Mtr. Hsg., Brg., Stator & Term (Item 8) are preassembled at the factory and must be replaced as a unit. Stator is permanently attached to the Motor Housing. Plug (Item 10); Seal, Thru Wall Term. (Item 11) and Bearing - Upper (Item 9) are replaceable.
- 2) When ordering Motor Housing, Bearing, Stator and Term. (Item 8); or Rotor and Bearing (Item 12), specify either GE or Emerson motor.
- 3) If an "X" follows Model No., or Date Mfg. on brass I.D. tag, consult factory for ordering of this part.
- 4) See FM0160 Parts Price Sheet for listing of parts prices.

# REPLACEMENT PARTS LIST FOR MODEL "WD4405"

See back page for illustration.

REF NO.	DESCRIPTION	QTY	NOTES	MODELS:			
				WD4405-A	WD4405-B	WD4405-C	WD4405-D
				2/98 thru 6/98	7/98 thru 4/03	5/03 thru 5/10	6/10 thru Current
1	COVER & CORD ASM.	1	3	154793	154793	154793	154793
2	BOLT, EYE	1		005926	N/A	N/A	N/A
3	COVER-MACH.	1	3	008860	008857	014152	014152
4	• GASKET,CASE/COVER	1		001011	001011	001011	001011
5	RELAY, 230V	0		N/A	N/A	N/A	N/A
6	• WIRE PKG (5) WIRES 1.5/2 HP	1		004751	004751	004751	004751
7	CAPACITOR & CLAMP ASM.	1		010666	010666	010666	010666
8	HOUSING, MTR. & STR.	1	1 & 2	006097	006097	006097	018909
9	BEARING, SLEEVE	1		001012	001012	001012	006703
	BEARING, RADIAL			N/A	N/A	N/A	N/A
10	• PLUG, TEST-WHITE	3		034090	034090	034090	034090
11	• SEAL, THRU WALL TERM.	3		003402	003402	003402	003402
12	ROTOR & BRG.	1	2	012192	012192	012192	150883
13	• BEARING, RADIAL	1		001013	001013	001013	010069
14	• SEAL, MTR HSG.	2		001014	001014	001014	001014
15	• OIL, DIELECTRIC	1		003168	003168	003168	014118
16	ADAPTER-MACH.	1		008862	008862	008862	008862
17	• WASHER, SEAL LOCATING & SNAP RING	1		011057	011057	011057	011057
18	• SEAL, SHAFT	2		002430	002430	002430	002430
19	ADAPTER-MACH. LOWER	1		008833	008833	008833	008833
20	IMPELLER ASM.	1		007671	007671	007671	007671
21	• KEY, WOODRUFF #404	1		006841	006841	006841	006841
22	• WASHER, 7/16 STD FLAT SS	1		006847	006847	006847	006847
23	• NUT, 7/16-20 SS HEX	1		006846	006846	006846	006846
24	HOUSING, PUMP-MACH.	1		005711	011784	011784	011784
25	CORD TERM. & SEAL POWER	1	3	154794	154794	154794	154794
26	• SEAL, CORD-ASM. & STR. RLF.	1	3	004375	004375	015634	015634
27	CLAMP, STRAIN RELIEF	1		013764	013764	013764	013764
28	CLAMP, #6 AUTO-SS	0		N/A	N/A	N/A	N/A
29	CORD, TERM. & SEAL CONTROL	0		N/A	N/A	N/A	N/A
30	• SEAL, CORD-ASM & STR. RLF. CONTROL CORD	0		N/A	N/A	N/A	N/A
31	CLAMP, STR. RLF.	0		N/A	N/A	N/A	N/A
32	• SCREW, #6-32X.25 RHM SL TC STLGR.	3		001877	001877	001877	001877
33	SWITCH, FLT-TERM. & SEAL	1		011876	011876	011876	011876
34	SEAL, CORD-ASM. & STRAIN RELIEF	1		094032	094032	094032	094032
35	CONNECTOR, WIRENUT	1		011868	011868	011868	011868
36	• SCREW, .25-20X.75 HHM-SS	4		001916	001916	001916	001916
37	• SCREW, .25-20X1" HHM-SS	4		007790	007790	007790	007790
38	• SCREW, .313-18 X 1"HH CAP-SS	10		002608	002608	002608	002608
39	• WASHER, LOCK SS .312 ID	2		N/A	006402	006402	006402
40	BRACKET, LIFTING	1		N/A	010589	016801	016801
41	RESISTOR ASSEMBLY	0		N/A	N/A	N/A	N/A
42	SENSOR WIRES	0		N/A	N/A	N/A	N/A
43	SENSOR CORDAGE TERM. & SEAL	0		N/A	N/A	N/A	N/A
44	SEAL, CORD-ASM. STR. RLF.	0		N/A	N/A	N/A	N/A
45	• WASHER, FLAT SS	2		N/A	N/A	008773	008773
▣	REBUILD KIT	1		012212	012383	016805	150994

• Items included in Rebuild Kit.

▣ Not Shown in Illustration.

## NOTES:

- 1) Mtr. Hsg., Brg., Stator & Term (Item 8) are preassembled at the factory and must be replaced as a unit. Stator is permanently attached to the Motor Housing. Plug (Item 10); Seal, Thru Wall Term. (Item 11) and Bearing - Upper (Item 9) are replaceable.
- 2) When ordering Motor Housing, Bearing, Stator and Term. (Item 8); or Rotor and Bearing (Item 12), specify either GE or Emerson motor.
- 3) If an "X" follows Model No., or Date Mfg. on brass I.D. tag, consult factory for ordering of this part.
- 4) See FM0160 Parts Price Sheet for listing of parts prices.

# REPLACEMENT PARTS LIST FOR MODEL "XE4405"

See back page for illustration.

REF NO.	DESCRIPTION	QTY	NOTES	MODELS:			
				XE4405-A	XE4405-B	XE4405-C	XE4405-D
				1/94 thru 10/97	11/97 thru 6/98	7/98 thru 4/03	5/03 thru Current
1	COVER & CORD ASM.	1	3	006151	006151	011041	012464
2	BOLT, EYE	1		005926	005926	005926	N/A
3	COVER-MACH.	1	3	005865	005865	008860	008857
4	• GASKET,CASE/COVER	1		001011	001011	001011	001011
5	RELAY, 230V	1		217093	217093	217093	217093
6	• WIRE PKG (5) WIRES 1.5/2 HP	1		004751	004751	004751	004751
7	CAPACITOR & CLAMP ASM.	1		002381	010666	010666	010666
8	HOUSING, MTR. & STR.	1	1 & 2	006097	006097	006097	006097
9	BEARING, SLEEVE	1		001012	001012	001012	001012
10	• PLUG, TEST-WHITE	3		034090	034090	034090	034090
11	• SEAL, THRU WALL TERM.	3		003402	003402	003402	003402
12	ROTOR & BRG.	1	2	012192	012192	012192	012192
13	• BEARING, RADIAL	1		001013	001013	001013	001013
14	• SEAL, MTR HSG.	2		001014	001014	001014	001014
15	• OIL, DIELECTRIC	1		003168	003168	003168	003168
16	ADAPTER-MACH.	1		008862	008862	008862	008862
17	• WASHER, SEAL LOCATING & SNAP RING	1		011057	011057	011057	011057
18	• SEAL, SHAFT	2		002430	002430	002430	002430
19	ADAPTER-MACH. LOWER	1		008833	008833	008833	008833
20	IMPELLER ASM.	1		007671	007671	007671	007671
21	• KEY, WOODRUFF #404	1		006841	006841	006841	006841
22	• WASHER, 7/16 STD FLAT SS	1		006847	006847	006847	006847
23	• NUT, 7/16-20 SS HEX	1		006846	006846	006846	006846
24	HOUSING, PUMP-MACH.	1		005711	005711	005711	011784
25	CORD TERM. & SEAL POWER	1	3	004376	004376	004376	004376
26	• SEAL, CORD-ASM. & STR. RLF.	1	3	004375	004375	004375	004375
27	CLAMP, STRAIN RELIEF	0		N/A	N/A	N/A	N/A
28	CLAMP, #6 AUTO-SS	0		N/A	N/A	N/A	N/A
29	CORD, TERM. & SEAL CONTROL	1		004377	004377	011042	011042
30	• SEAL, CORD-ASM & STR. RLF. CONTROL CORD	1		004378	004378	094032	094032
31	CLAMP, STR. RLF.	1		N/A	N/A	001770	001770
32	• SCREW, #6-32X.25 RHM SL TC STLGR.	4		001877	001877	001877	001877
33	SWITCH, FLT-TERM. & SEAL	0		N/A	N/A	N/A	N/A
34	SEAL, CORD-ASM. & STRAIN RELIEF	0		N/A	N/A	N/A	N/A
35	CONNECTOR, WIRENUT	0		N/A	N/A	N/A	N/A
36	• SCREW, .25-20X.75 HHM-SS	4		001916	001916	001916	001916
37	• SCREW, .25-20X1" HHM-SS	4		007790	007790	007790	007790
38	• SCREW, .313-18 X 1"HH CAP-SS	10		002608	002608	002608	002608
39	• WASHER, LOCK SS .312 ID	2		N/A	N/A	006402	006402
40	BRACKET, LIFTING	1		N/A	N/A	010589	010589
41	RESISTOR ASSEMBLY	0		N/A	N/A	N/A	N/A
42	SENSOR WIRES	0		N/A	N/A	N/A	N/A
43	SENSOR CORDAGE TERM. & SEAL	0		N/A	N/A	N/A	N/A
44	SEAL, CORD-ASM. STR. RLF.	0		N/A	N/A	N/A	N/A
45	• WASHER, FLAT SS	0		N/A	N/A	N/A	N/A
▣	REBUILD KIT	1		012198	012198	012483	012382

• Items included in Rebuild Kit.

▣ Not Shown in Illustration.

## NOTES:

- 1) Mtr. Hsg., Brg., Stator & Term (Item 8) are preassembled at the factory and must be replaced as a unit. Stator is permanently attached to the Motor Housing. Plug (Item 10); Seal, Thru Wall Term. (Item 11) and Bearing - Upper (Item 9) are replaceable.
- 2) When ordering Motor Housing, Bearing, Stator and Term. (Item 8); or Rotor and Bearing (Item 12), specify either GE or Emerson motor.
- 3) If an "X" follows Model No., or Date Mfg. on brass I.D. tag, consult factory for ordering of this part.
- 4) See FM0160 Parts Price Sheet for listing of parts prices.

# REPLACEMENT PARTS LIST FOR MODELS "F4405" & "G4405"

See back page for illustration.

REF NO.	DESCRIPTION	QTY	NOTES	MODELS: F4405-A F4405-B F4405-C			G4405-A	G4405-B	G4405-C
				1/94 thru 6/98	7/98 thru 5/10	6/10 thru Current			
1	COVER & CORD ASM.	1	3	014165	014161	014161	011332	012466	012466
2	BOLT, EYE	1		005926	N/A	N/A	005926	N/A	N/A
3	COVER-MACH.	1	3	014151	014150	014150	005863	001077	001077
4	• GASKET,CASE/COVER	1		001011	001011	001011	001011	001011	001011
5	RELAY, 230V	0		N/A	N/A	N/A	N/A	N/A	N/A
6	• WIRE PKG (5) WIRES 1.5/2 HP	0		N/A	N/A	N/A	N/A	N/A	N/A
7	CAPACITOR & CLAMP ASM.	0		N/A	N/A	N/A	N/A	N/A	N/A
8	HOUSING, MTR. & STR.	1	1 & 2	008592	008592	150963	006343	006343	150964
9	BEARING, SLEEVE	1		001012	001012	N/A	001012	001012	N/A
	BEARING, RADIAL			N/A	N/A	006703	N/A	N/A	006703
10	• PLUG, TEST-WHITE	3		034090	034090	034090	034090	034090	034090
11	• SEAL, THRU WALL TERM.	3		003402	003402	003402	003402	003402	003402
12	ROTOR & BRG.	1	2	012195	012195	150883	012195	012195	150883
13	• BEARING, RADIAL	1		001013	001013	010069	001013	001013	010069
14	• SEAL, MTR HSG.	2		001014	001014	001014	001014	001014	001014
15	• OIL, DIELECTRIC	1		003168	003168	014118	003168	003168	014118
16	ADAPTER-MACH.	1		008862	008862	008862	008862	008862	008862
17	• WASHER, SEAL LOCATING & SNAP RING	1		011057	011057	011057	011057	011057	011057
18	• SEAL, SHAFT	2		002430	002430	002430	002430	002430	002430
19	ADAPTER-MACH. LOWER	1		008833	008833	008833	008833	008833	008833
20	IMPELLER ASM.	1		007671	007671	007671	007671	007671	007671
21	• KEY, WOODRUFF #404	1		006841	006841	006841	006841	006841	006841
22	• WASHER, 7/16 STD FLAT SS	1		006847	006847	006847	006847	006847	006847
23	• NUT, 7/16-20 SS HEX	1		006846	006846	006846	006846	006846	006846
24	HOUSING, PUMP-MACH.	1		005711	011784	011784	005711	011784	011784
25	CORD TERM. & SEAL POWER	1	3	014177	014177	014177	005131	005131	005131
26	• SEAL, CORD-ASM. & STR. RLF.	1	3	015634	015634	015634	094032	094032	094032
27	CLAMP, STRAIN RELIEF	1	3	013764	013764	013764	001770	001770	001770
28	CLAMP, #6 AUTO-SS	0		N/A	N/A	N/A	N/A	N/A	N/A
29	CORD, TERM. & SEAL CONTROL	0		N/A	N/A	N/A	N/A	N/A	N/A
30	• SEAL, CORD-ASM & STR. RLF. CONTROL CORD	0		N/A	N/A	N/A	N/A	N/A	N/A
31	CLAMP, STR. RLF.	0		N/A	N/A	N/A	N/A	N/A	N/A
32	• SCREW, #6-32X.25 RHM SL TC STLGR.	1		001877	001877	001877	001877	001877	001877
33	SWITCH, FLT-TERM. & SEAL	0		N/A	N/A	N/A	N/A	N/A	N/A
34	SEAL, CORD-ASM. & STRAIN RELIEF	0		N/A	N/A	N/A	N/A	N/A	N/A
35	CONNECTOR, WIRENUT	0		N/A	N/A	N/A	N/A	N/A	N/A
36	• SCREW, .25-20X.75 HHM-SS	4		001916	001916	001916	001916	001916	001916
37	• SCREW, .25-20X1" HHM-SS	4		007790	007790	007790	007790	007790	007790
38	• SCREW, .313-18 X 1"HH CAP-SS	10		002608	002608	002608	002608	002608	002608
39	• WASHER, LOCK SS .312 ID	2		N/A	006402	006402	N/A	006402	006402
40	BRACKET, LIFTING	1		N/A	016801	016801	N/A	016801	016801
41	RESISTOR ASSEMBLY	0		N/A	N/A	N/A	N/A	N/A	N/A
42	SENSOR WIRES	0		N/A	N/A	N/A	N/A	N/A	N/A
43	SENSOR CORDAGE TERM. & SEAL	0		N/A	N/A	N/A	N/A	N/A	N/A
44	SEAL, CORD-ASM. STR. RLF.	0		N/A	N/A	N/A	N/A	N/A	N/A
45	• WASHER, FLAT SS	2		N/A	008773	008773	N/A	008773	008773
▣	REBUILD KIT	1		012197	016805	150994	012197	016805	150994

• Items included in Rebuild Kit.

▣ Not Shown in Illustration.

## NOTES:

- 1) Mtr. Hsg., Brg., Stator & Term (Item 8) are preassembled at the factory and must be replaced as a unit. Stator is permanently attached to the Motor Housing. Plug (Item 10); Seal, Thru Wall Term. (Item 11) and Bearing - Upper (Item 9) are replaceable.
- 2) When ordering Motor Housing, Bearing, Stator and Term. (Item 8); or Rotor and Bearing (Item 12), specify either GE or Emerson motor.
- 3) If an "X" follows Model No., or Date Mfg. on brass I.D. tag, consult factory for ordering of this part.
- 4) See FM0160 Parts Price Sheet for listing of parts prices.

# REPLACEMENT PARTS LIST FOR MODELS "J4405" & "BA4405"

See back page for illustration.

REF NO.	DESCRIPTION	QTY	NOTES	MODELS:				8/96 thru 6/98	7/98 thru 5/10	6/10 thru Current
				J4405-A	J4405-B	J4405-C	J4405-D			
1	COVER & CORD ASM.	1	3	012190	012465	014161	014161	011332	012466	012466
2	BOLT, EYE	1		005926	N/A	N/A	N/A	005926	N/A	N/A
3	COVER-MACH.	1	3	005864	004372	014150	014150	005863	001077	001077
4	• GASKET,CASE/COVER	1		001011	001011	001011	001011	001011	001011	001011
5	RELAY, 230V	0		N/A	N/A	N/A	N/A	N/A	N/A	N/A
6	• WIRE PKG (5) WIRES 1.5/2 HP	0		N/A	N/A	N/A	N/A	N/A	N/A	N/A
7	CAPACITOR & CLAMP ASM.	0		N/A	N/A	N/A	N/A	N/A	N/A	N/A
8	HOUSING, MTR. & STR.	1	1 & 2	012193	012193	012193	150962	011333	011333	150965
9	BEARING, SLEEVE	1		001012	001012	001012	N/A	001012	001012	N/A
	BEARING, RADIAL			N/A	N/A	N/A	006703	N/A	N/A	006703
10	• PLUG, TEST-WHITE	3		034090	034090	034090	034090	034090	034090	034090
11	• SEAL, THRU WALL TERM.	3		003402	003402	003402	003402	003402	003402	003402
12	ROTOR & BRG.	1	2	012195	012195	012195	150883	012195	012195	150883
13	• BEARING, RADIAL	1		001013	001013	001013	010069	001013	001013	010069
14	• SEAL, MTR HSG.	2		001014	001014	001014	001014	001014	001014	001014
15	• OIL, DIELECTRIC	1		003168	003168	003168	014118	003168	003168	014118
16	ADAPTER-MACH.	1		008862	008862	008862	008862	008862	008862	008862
17	• WASHER, SEAL LOCATING & SNAP RING	1		011057	011057	011057	011057	011057	011057	011057
18	• SEAL, SHAFT	2		002430	002430	002430	002430	002430	002430	002430
19	ADAPTER-MACH. LOWER	1		008833	008833	008833	008833	008833	008833	008833
20	IMPELLER ASM.	1		007671	007671	007671	007671	007671	007671	007671
21	• KEY, WOODRUFF #404	1		006841	006841	006841	006841	006841	006841	006841
22	• WASHER, 7/16 STD FLAT SS	1		006847	006847	006847	006847	006847	006847	006847
23	• NUT, 7/16-20 SS HEX	1		006846	006846	006846	006846	006846	006846	006846
24	HOUSING, PUMP-MACH.	1		005711	011784	011784	011784	005711	011784	011784
25	CORD TERM. & SEAL POWER	1	3	012189	012189	014177	014177	005131	005131	005131
26	• SEAL, CORD-ASM. & STR. RLF.	1	3	004375	004375	015634	015634	094032	094032	094032
27	CLAMP, STRAIN RELIEF	1	3	N/A	N/A	013764	013764	001770	001770	001770
28	CLAMP, #6 AUTO-SS	0		N/A	N/A	N/A	N/A	N/A	N/A	N/A
29	CORD, TERM. & SEAL CONTROL	0		N/A	N/A	N/A	N/A	N/A	N/A	N/A
30	• SEAL, CORD-ASM & STR. RLF.	0		N/A	N/A	N/A	N/A	N/A	N/A	N/A
31	CLAMP, STR. RLF.	0		N/A	N/A	N/A	N/A	N/A	N/A	N/A
32	• SCREW, #6-32X.25 RHM SL TC STLGR.	1		001877	001877	001877	001877	001877	001877	001877
33	SWITCH, FLT-TERM. & SEAL	0		N/A	N/A	N/A	N/A	N/A	N/A	N/A
34	SEAL, CORD-ASM. & STRAIN RELIEF	0		N/A	N/A	N/A	N/A	N/A	N/A	N/A
35	CONNECTOR, WIRENUT	0		N/A	N/A	N/A	N/A	N/A	N/A	N/A
36	• SCREW, .25-20X.75 HHM-SS	4		001916	001916	001916	001916	001916	001916	001916
37	• SCREW, .25-20X1" HHM-SS	4		007790	007790	007790	007790	007790	007790	007790
38	• SCREW, .313-18 X 1"HH CAP-SS	10		002608	002608	002608	002608	002608	002608	002608
39	• WASHER, LOCK SS .312 ID	2		N/A	006402	006402	006402	N/A	006402	006402
40	BRACKET, LIFTING	1		N/A	010589	016801	016801	N/A	016801	016801
41	RESISTOR ASSEMBLY	0		N/A	N/A	N/A	N/A	N/A	N/A	N/A
42	SENSOR WIRES	0		N/A	N/A	N/A	N/A	N/A	N/A	N/A
43	SENSOR CORDAGE TERM. & SEAL	0		N/A	N/A	N/A	N/A	N/A	N/A	N/A
44	SEAL, CORD-ASM. STR. RLF.	0		N/A	N/A	N/A	N/A	N/A	N/A	N/A
45	• WASHER, FLAT SS	2		N/A	N/A	008773	008773	N/A	008773	008773
▣	REBUILD KIT	1		012197	012381	150994	150994	012197	150994	150994

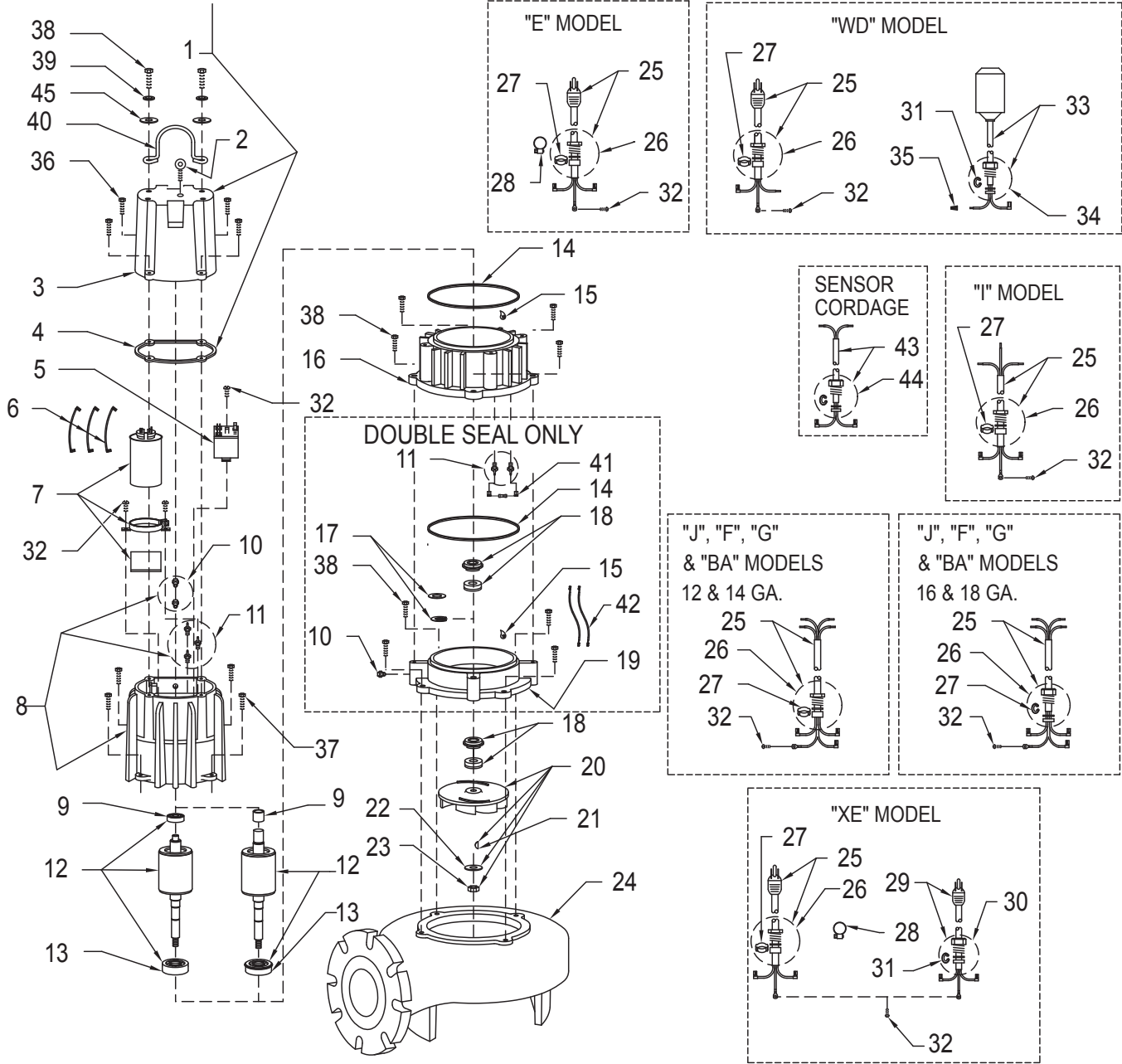
- Items included in Rebuild Kit.
- ▣ Not Shown in Illustration.

## NOTES:

- 1) Mtr. Hsg., Brg., Stator & Term (Item 8) are preassembled at the factory and must be replaced as a unit. Stator is permanently attached to the Motor Housing. Plug (Item 10); Seal, Thru Wall Term. (Item 11) and Bearing - Upper (Item 9) are replaceable.
- 2) When ordering Motor Housing, Bearing, Stator and Term. (Item 8); or Rotor and Bearing (Item 12), specify either GE or Emerson motor.
- 3) If an "X" follows Model No., or Date Mfg. on brass I.D. tag, consult factory for ordering of this part.
- 4) See FM0160 Parts Price Sheet for listing of parts prices.

# REPLACEMENT PARTS ILLUSTRATION FOR 4405 - ALL MODELS

APPLICABLE CORD, SEAL, & GROUND SCREW



SK1814



MAIL TO: P.O. BOX 16347 • Louisville, KY 40256-0347  
SHIP TO: 3649 Cane Run Road • Louisville, KY 40211-1961  
(502) 778-2731 • 1 (800) 928-PUMP • FAX (502) 774-3624

Trusted. Tested. Tough.®

Visit our website:  
[zoellerpumps.com](http://zoellerpumps.com)