

Product information presented here reflects conditions at time of publication. Consult factory regarding discrepancies or inconsistencies.

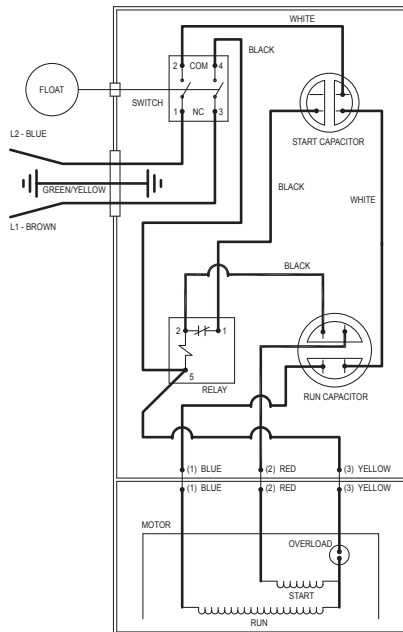


MAIL TO: P.O. BOX 16347 • Louisville, KY 40256-0347  
 SHIP TO: 3649 Cane Run Road • Louisville, KY 40211-1961  
 1 (800) 928-PUMP

Visit our website:  
[zoellerpumps.com](http://zoellerpumps.com)

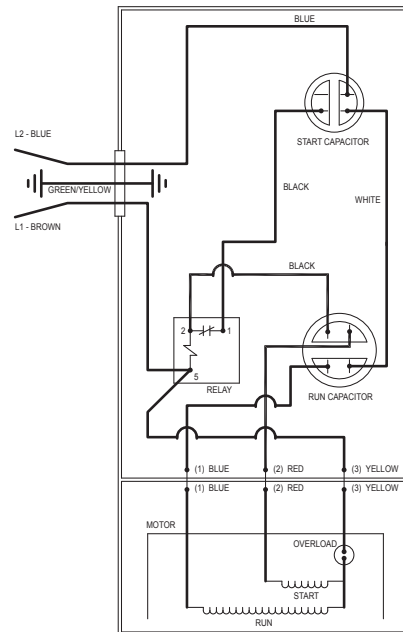
## REPLACEMENT PARTS LIST FOR MODELS:

U803 AUTOMATIC 220V  
 V803 NONAUTOMATIC 220V  
 U805 AUTOMATIC 220V  
 V805 NONAUTOMATIC 220V  
 U807 AUTOMATIC 220V  
 V807 NONAUTOMATIC 220V



153223

WIRING DIAGRAM FOR MODELS  
 "U803", "U805", "U807"  
 All revisions



153224

WIRING DIAGRAM FOR MODELS  
 "V803", "V805", "V807"  
 All revisions

# REPLACEMENT PARTS LIST FOR MODELS "U803", "U805", "U807", "V803", "V805", AND "V807"

|          |  |     |        |                    | MODELS: U803-A<br>U805-A<br>U807-A |  | V803-A<br>V805-A<br>V807-A |  |
|----------|--|-----|--------|--------------------|------------------------------------|--|----------------------------|--|
| REF. NO. | DESCRIPTION  | QTY | NOTES  | 12/16 thru Current | 12/16 thru Current                 |  |                            |  |
| 1        | COVER ASSEMBLY - AUTOMATIC (CORD, 15' LENGTH SJOW NO PLUG)                               | 1   |        | 156934             | N/A                                |  |                            |  |
|          | COVER ASSEMBLY - AUTOMATIC (CORD, 15' LENGTH H07RN-F3G1,5; I PLUG)                       |     | 154484 | N/A                |                                    |  |                            |  |
|          | COVER ASSEMBLY- NON-AUTOMATIC (CORD, 15' LENGTH SJOW NO PLUG)                            |     | N/A    | 156935             |                                    |  |                            |  |
|          | COVER ASSEMBLY- NON-AUTOMATIC (CORD, 15' LENGTH H07RN-F3G1,5; I PLUG)                    |     | N/A    | 154485             |                                    |  |                            |  |
| 2        | • HANDLE   | 1   |        | 267032             | 267032                             |  |                            |  |
| 3        | • RETAINER - NON-AUTOMATIC   | 2   |        | N/A                | 267053                             |  |                            |  |
| 4        | • GUARD - AUTOMATIC  | 1   |        | 267008             | N/A                                |  |                            |  |
| 5        | • ARM AND SEAL ASSEMBLY AUTOMATIC  | 1   |        | 004741             | N/A                                |  |                            |  |
| 6        | CORD SEAL ASSEMBLY - AUTOMATIC AND NON-AUTOMATIC (CORD, 15' LENGTH SJOW NO PLUG)         | 1   |        | 156933             | 156933                             |  |                            |  |
|          | CORD SEAL ASSEMBLY - AUTOMATIC AND NON-AUTOMATIC (CORD, 15' LENGTH H07RN-F3G1,5; I PLUG) |     | 152015 | 152015             |                                    |  |                            |  |
| 7        | • CORD SEAL ASSEMBLY (CORD, 16-3 SJOW)   | 1   |        | 153747             | 153747                             |  |                            |  |
|          | • CORD SEAL ASSEMBLY (CORD, H07RN-F3G1,5)  |     | 151312 | 151312             |                                    |  |                            |  |
| 8        | SWITCH ASSEMBLY  | 1   |        | 004744             | N/A                                |  |                            |  |
| 9        | FLOAT ASSEMBLY   | 1   |        | 153748             | N/A                                |  |                            |  |
| 10       | • COVER GASKET   | 1   |        | 001011             | 001011                             |  |                            |  |
| 11       | RUN CAPACITOR ASSEMBLY   | 1   |        | 154923             | 154923                             |  |                            |  |
| 12       | START CAPACITOR ASSEMBLY   | 1   |        | 153750             | 153750                             |  |                            |  |
| 13       | RELAY ASSEMBLY   | 1   |        | 153751             | 153751                             |  |                            |  |
| 14       | • WIRE PACK - AUTOMATIC AND NON-AUTOMATIC  | 1   |        | 153752             | 153752                             |  |                            |  |
| 15       | ROTOR & STATOR ASSEMBLY  |     |        | 157961             | 157961                             |  |                            |  |
| 16       | IMPELLER ASSEMBLY - 803  |     |        | 153760             | 153760                             |  |                            |  |
|          | IMPELLER ASSEMBLY - 805  |     |        | 153761             | 153761                             |  |                            |  |
|          | IMPELLER ASSEMBLY - 807  |     |        | 153762             | 153762                             |  |                            |  |
| 17       | ADAPTER  | 1   |        | 153151             | 153151                             |  |                            |  |
| 18       | PUMP HOUSING   | 1   |        | 153152             | 153152                             |  |                            |  |
| 19       | CUTTER ASSEMBLY  | 1   |        | 153763             | 153763                             |  |                            |  |
| 20       | • DIELECTRIC OIL (40 OZ)   | 1   |        | 153764             | 153764                             |  |                            |  |
| 21       | • BEARING SPRING   | 1   |        | 017192             | 017192                             |  |                            |  |
| 22       | • BEARING - UPPER  | 1   |        | 006703             | 006703                             |  |                            |  |
| 23       | • KEY - WOODRUFF   | 1   |        | 006841             | 006841                             |  |                            |  |
| 24       | • BEARING - LOWER  | 1   |        | 010069             | 010069                             |  |                            |  |
| 25       | • SEAL - MOTOR HOUSING   | 1   |        | 001014             | 001014                             |  |                            |  |
| 26       | • SHAFT SEAL ASSEMBLY  | 1   |        | 011681             | 011681                             |  |                            |  |
| 27       | • THRU WALL TERMINAL   | 3   |        | 003402             | 003402                             |  |                            |  |
| 28       | • TEST PLUG  | 2   |        | 034090             | 034090                             |  |                            |  |
| 29       | • SCREW 1/4-20 X 1 LONG  | 12  |        | 007790             | 007790                             |  |                            |  |
| 30       | • SCREW #10-24 X 3/8 LONG  | 2   | 4      | 001883             | 001883                             |  |                            |  |
| 31       | • SCREW #6-32 X 1/4 LONG - GREEN   | 4   |        | 001877             | 001877                             |  |                            |  |
| 32       | • SCREW #6-32 X 7/16 LONG  | 3   |        | 004644             | 004644                             |  |                            |  |
| 33       | • SEM SCREW #10-24 X 3/8 LONG  | 1   |        | 002000             | 002000                             |  |                            |  |
| 34       | • SCREW #6-32 X 1/2 LONG   | 6   |        | 152866             | 152866                             |  |                            |  |
| 35       | • SCREW #10-24 X 5/8 LONG  | 1   | 4      | 001884             | 001884                             |  |                            |  |
| 36       | INSULATOR FLAG TERMINAL  | 2   |        | 001797             | N/A                                |  |                            |  |
| □        | REBUILD KIT  | 1   |        | 154486             | 154486                             |  |                            |  |

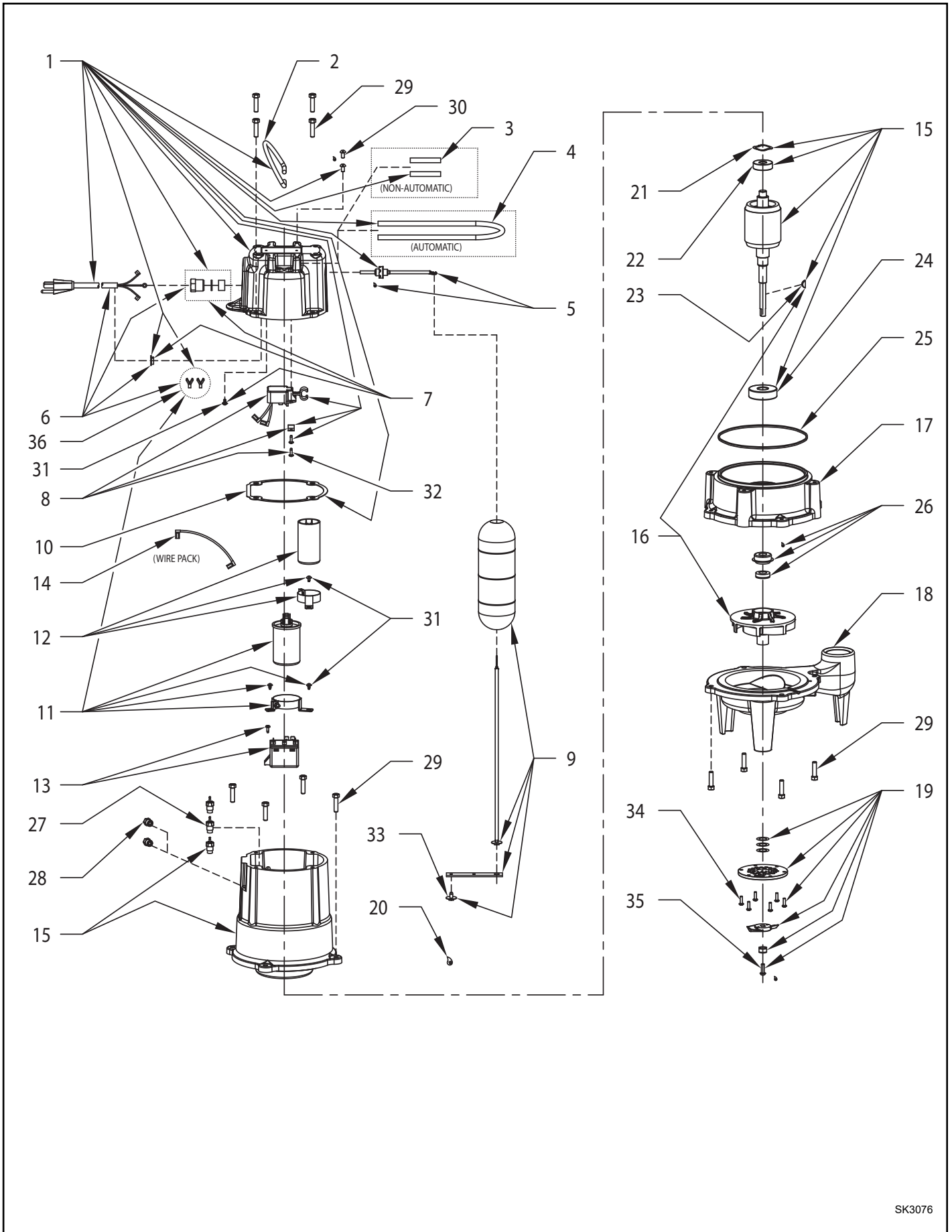
• Items included in Rebuild Kit.

□ Not shown in illustration.

## NOTES:

- 1) See FM0160 Parts Price Sheet for listing of parts prices.
- 2) "NA" indicates, not applicable.
- 3) If an "X" follows model no., or date Mfg. on ID tag, consult factory for ordering any parts.
- 4) Apply Loctite thread locker #222.

**REPLACEMENT PARTS ILLUSTRATION FOR MODELS "U803","U805","U807","V803",  
"V805", AND "V807"**



SK3076

## NOTES



MAIL TO: P.O. BOX 16347 • Louisville, KY 40256-0347  
SHIP TO: 3649 Cane Run Road • Louisville, KY 40211-1961  
1 (800) 928-PUMP

Trusted. Tested. Tough.®

Visit our website:  
[zoellerpumps.com](http://zoellerpumps.com)