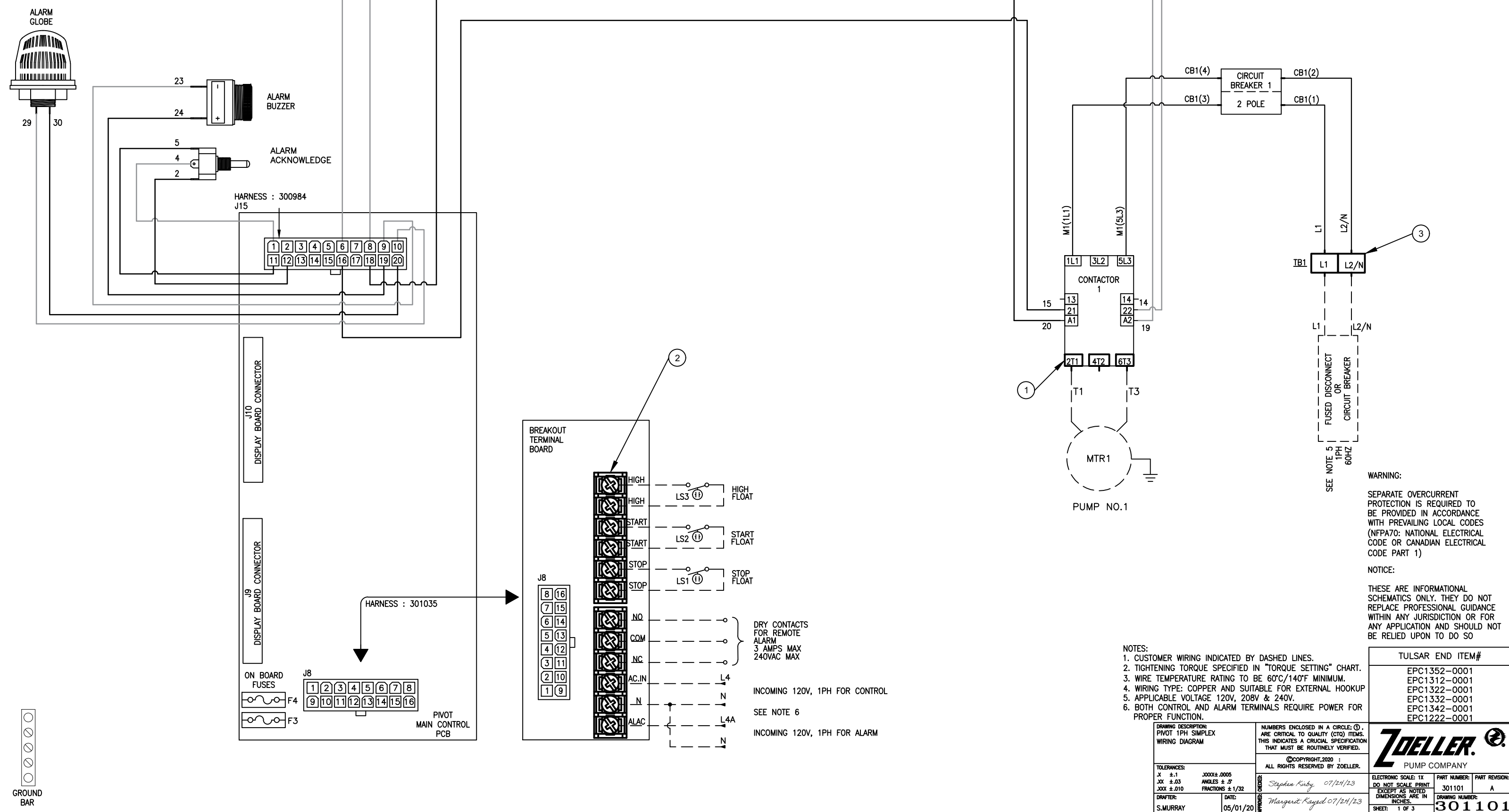


DRAWING REVISIONS				
LTR	BY	DATE	ECO #	DESCRIPTION
A	ISM	05/01/20	11069	RELEASE
B	AF	09/15/20	11110	JUMPER REMOVED
C	AF	01/13/21	11188	LEGAL NOTICE ADDED
D	AF	06/21/21	11320	ELECTRICAL SCHEMATIC ADDED
E	AF	12/07/21	11391	APPLICABLE VOLTAGE UPDATED
F	PY	11/11/22	11437	TORQUE SETTING & NOTE ADDED
G	HK	05/31/23	11605	DRAWING UPDATES

CUSTOMER TORQUE SETTING		
NUMBER	COMPONENT	TORQUE
1	CONTACTOR LC1D09G7-LC1D18G7	1.7 N.m. 15 lb-in
	CONTACTOR LC1D25G7-LC1D38G7	2.5 N.m. 22 lb-in
2	BREAKOUT TERMINAL BOARD	1.15 N.m. 10 lb-in
3	TERMINAL BLOCK 6mm ² -CROSS SECTION	1.5-1.8 N.m. 13.3-15.9 lb-in
	TERMINAL BLOCK 16mm ² -CROSS SECTION	2.5-3 N.m. 22.1-26.5 lb-in



WARNING:
SEPARATE OVERCURRENT PROTECTION IS REQUIRED TO BE PROVIDED IN ACCORDANCE WITH PREVAILING LOCAL CODES (NFPA70: NATIONAL ELECTRICAL CODE OR CANADIAN ELECTRICAL CODE PART 1)

NOTICE:
THESE ARE INFORMATIONAL SCHEMATICS ONLY. THEY DO NOT REPLACE PROFESSIONAL GUIDANCE WITHIN ANY JURISDICTION OR FOR ANY APPLICATION AND SHOULD NOT BE RELIED UPON TO DO SO

- NOTES:**
- CUSTOMER WIRING INDICATED BY DASHED LINES.
 - TIGHTENING TORQUE SPECIFIED IN "TORQUE SETTING" CHART.
 - WIRE TEMPERATURE RATING TO BE 60°C/140°F MINIMUM.
 - WIRING TYPE: COPPER AND SUITABLE FOR EXTERNAL HOOKUP
 - APPLICABLE VOLTAGE 120V, 208V & 240V.
 - BOTH CONTROL AND ALARM TERMINALS REQUIRE POWER FOR PROPER FUNCTION.

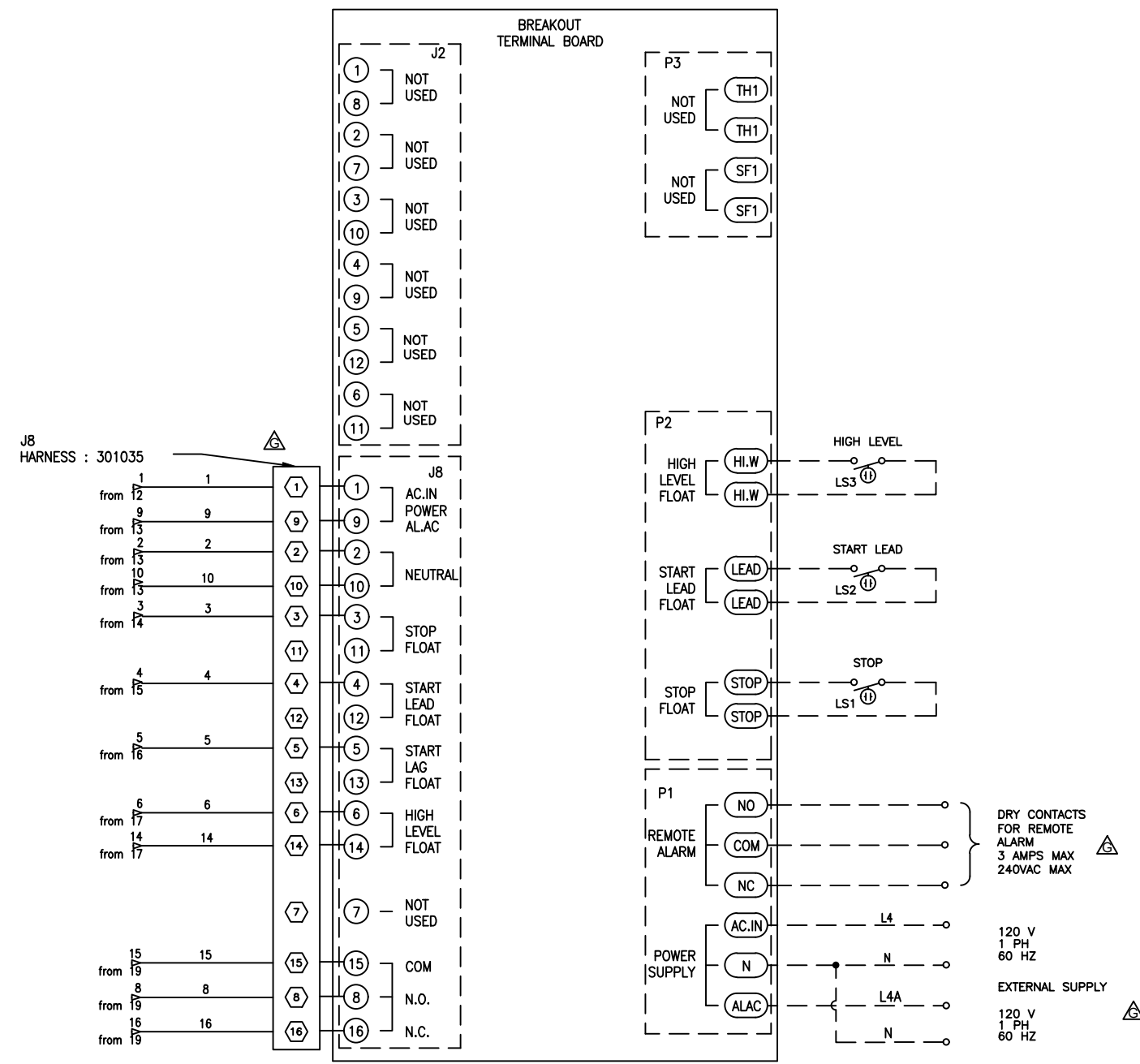
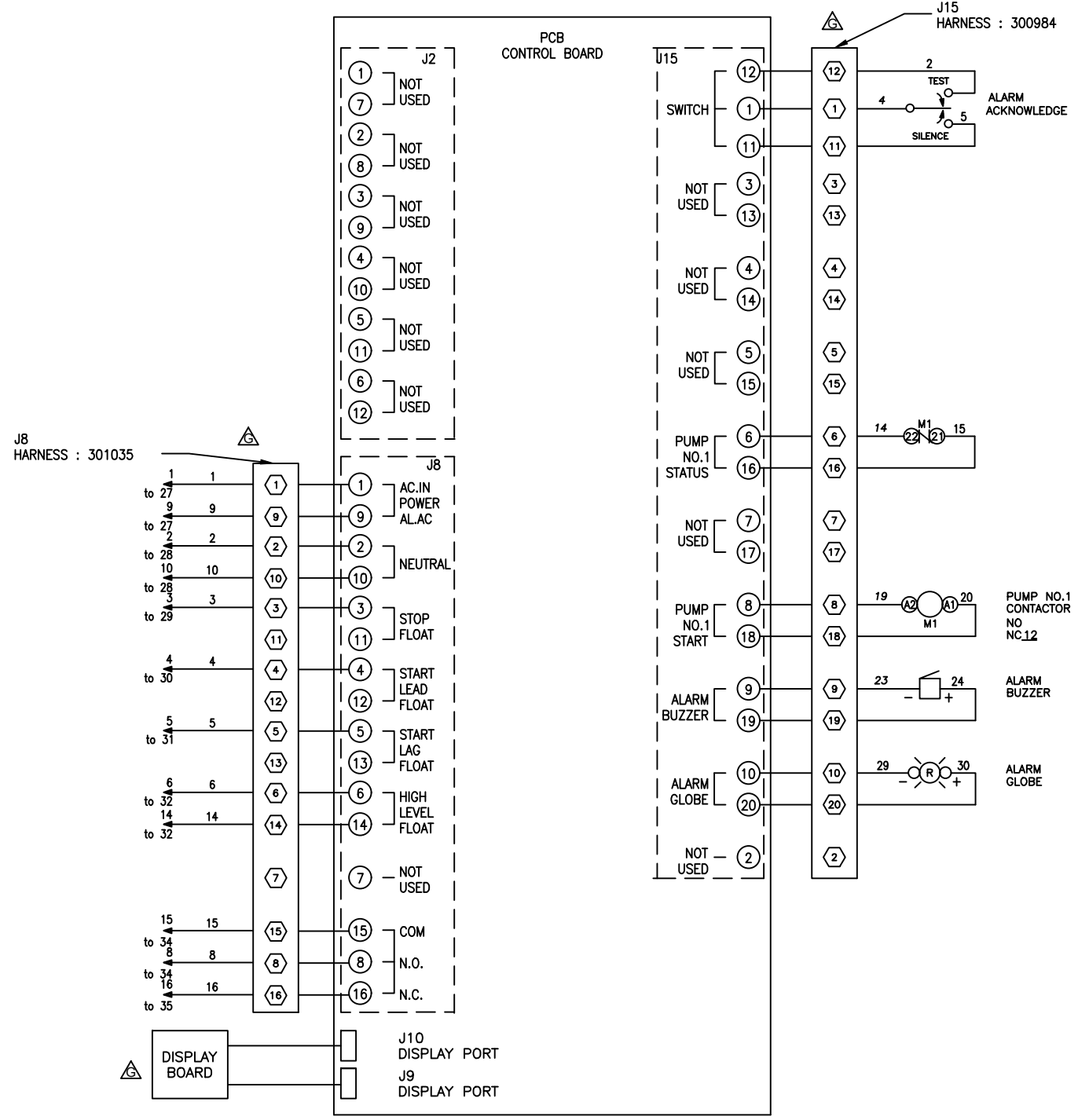
TULSAR END ITEM#
EPC1352-0001
EPC1312-0001
EPC1322-0001
EPC1332-0001
EPC1342-0001
EPC1222-0001

DRAWING DESCRIPTION: PIVOT 1PH SIMPLEX WIRING DIAGRAM		NUMBERS ENCLOSED IN A CIRCLE (1), (2), (3) ARE CRITICAL TO QUALITY (CTQ) ITEMS. THIS INDICATES A CRUCIAL SPECIFICATION THAT MUST BE ROUTINELY VERIFIED.	
TOLERANCES: X ±.1 XX ±.03 XXX ±.010		©COPYRIGHT, 2020 : ALL RIGHTS RESERVED BY ZOELLER.	
DRAWN BY: S. MURRAY	DATE: 05/01/20	DESIGNED BY: Margaret Kaye 07/24/23	DATE: 07/24/23
ELECTRONIC SCALE: 1X DO NOT SCALE PRINT EXCEPT AS NOTED DIMENSIONS ARE IN INCHES.		PART NUMBER: 301101	PART REVISION: A
SHEET: 1 OF 3		DRAWING NUMBER: 301101	



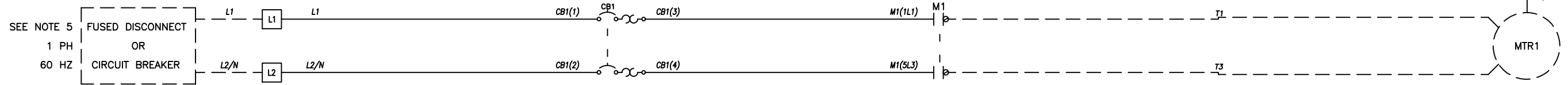
1
2
3
4
5
6
7
8
9
10
11
12
13
14
15
16
17
18
19
20

21
22
23
24
25
26
27
28
29
30
31
32
33
34
35



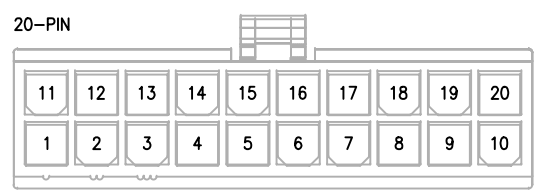
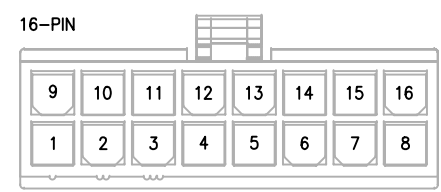
TERMINAL LEGEND
◻ DENOTE MOLEX PIN

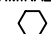
36
37
38
39
40
41
42
43
44
45
46
47
48
49
50
51
52
53
54
55




PUMP NO.1

MOLEX DETAILS



TERMINAL LEGEND
 DENOTE MOLEX PIN

ZOELLER 
PUMP COMPANY

THIS SHEET MUST BE ACCOMPANIED BY ALL RELATED SHEETS.
SHEET: 3 OF 3

DRAWING NUMBER:
301101