

Trusted. Tested. Tough.®

Product information presented here reflects conditions at time of publication. Consult factory regarding discrepancies or inconsistencies.



SECTION: 2.50.110

FM1936

0722

Supersedes

1120

MAIL TO: P.O. BOX 16347 • Louisville, KY 40256-0347
SHIP TO: 3649 Cane Run Road • Louisville, KY 40211-1961
TEL: (502) 778-2731 • 1 (800) 928-PUMP • FAX: (502) 774-3624

Visit our website:
zoellerpumps.com

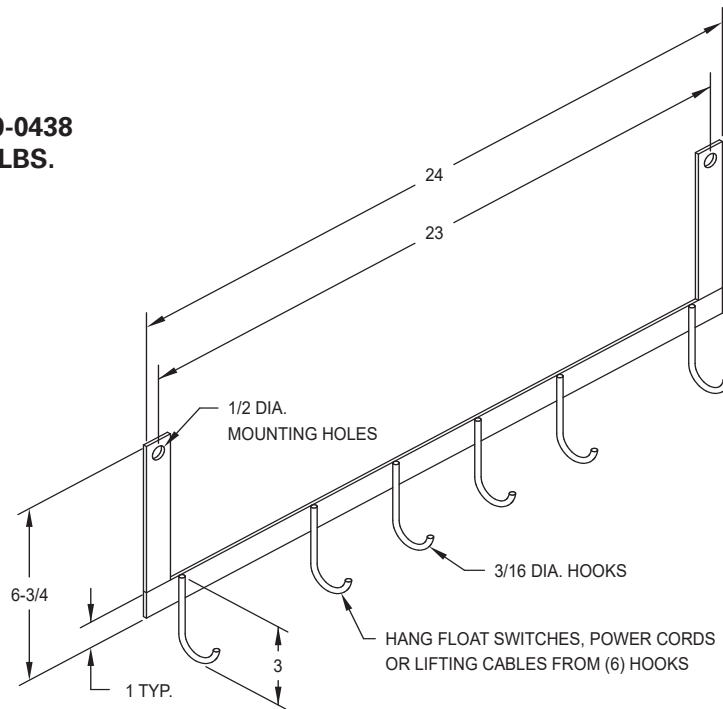


FLOAT SWITCH BRACKETS (For Use with Weighted Floats)



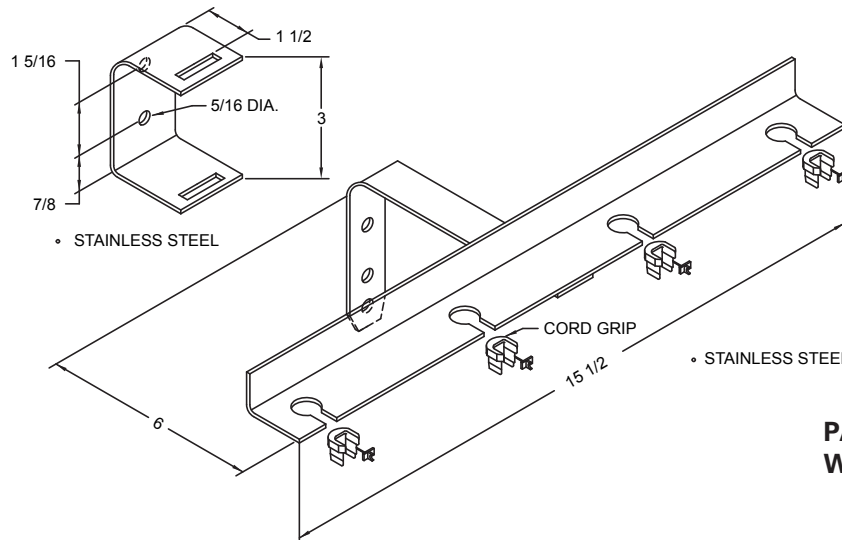
Also see FM0526 for Float Tree Assemblies for floats that use clamp type hangers.

PART NO: 10-0438
WEIGHT: 2 LBS.



- TYPE 304 STAINLESS STEEL CONSTRUCTION.
- WALL OR ACCESS FRAME MOUNTING.

zepa0298



PART NO: 10-0253
WEIGHT: 9 LBS.

zepb0513