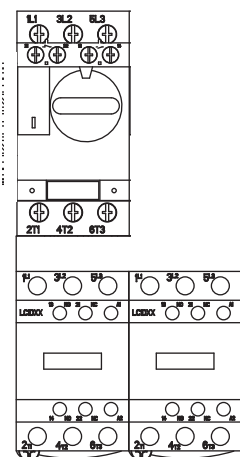
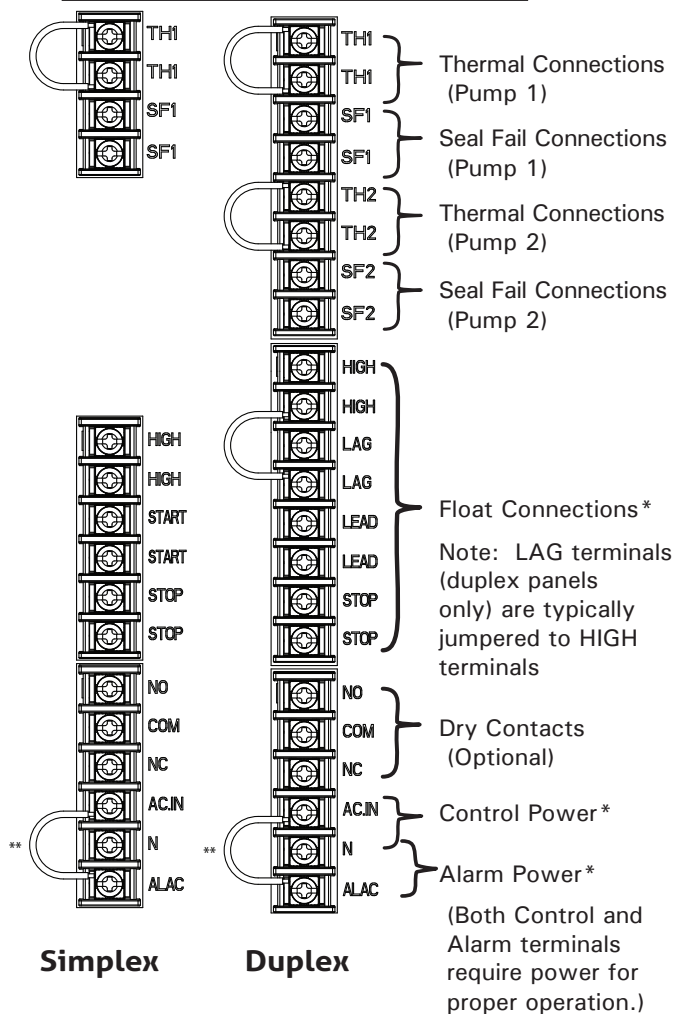
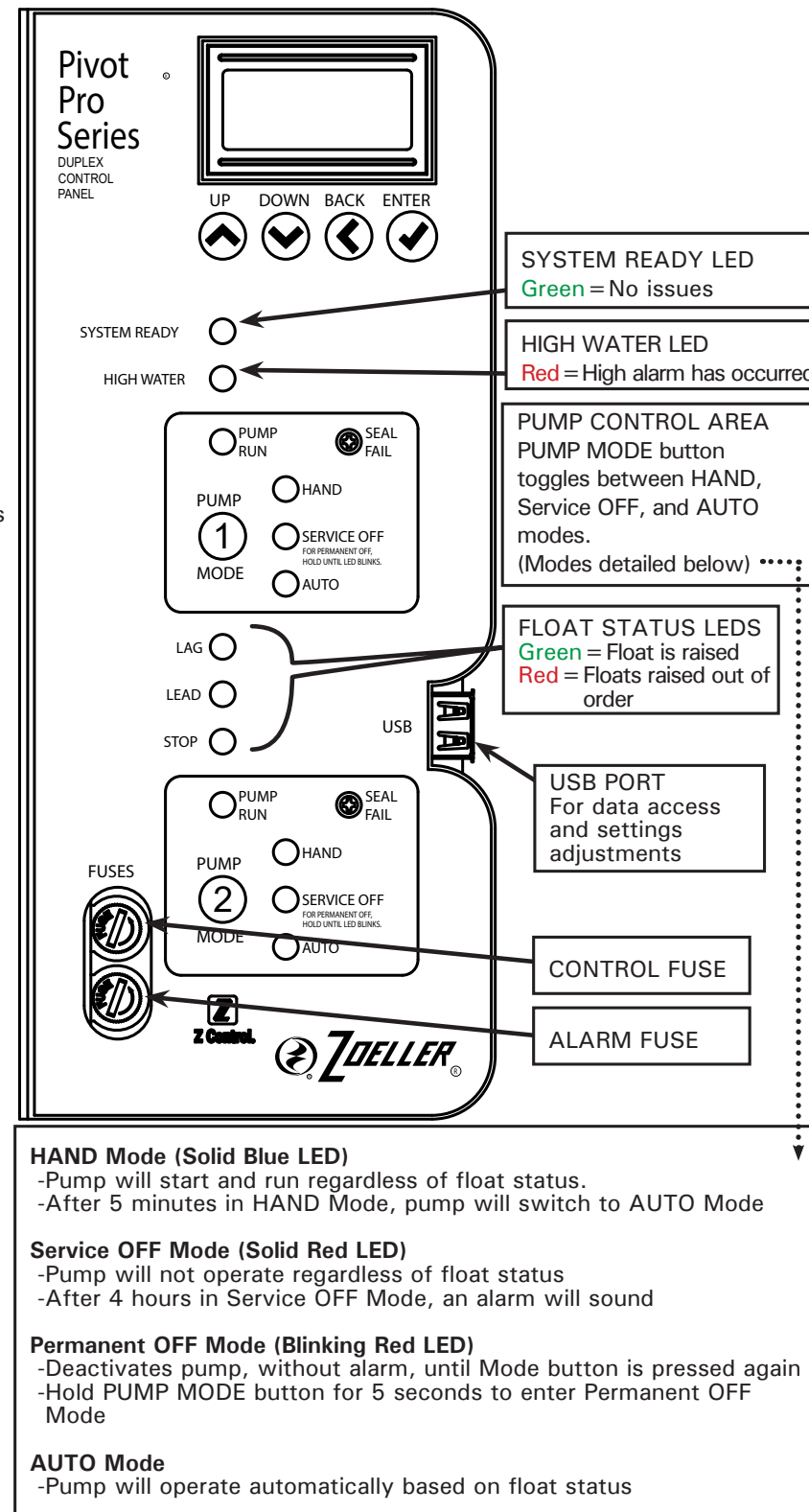


# Pivot® Pro+ Reversing Quick Reference Guide

## Essential Electrical Connections



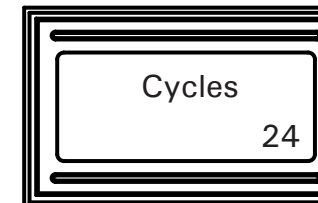
## Basic Functions



## Before You Begin...

- This guide provides an overview of basic Pivot Pro features - further explanation can be found in the manual
- Pivot Pro uses intelligent logic to keep the system operational in the event of failures – certain behaviors may be unfamiliar at first
- Pivot Pro is designed to use just 3 floats for most applications, regardless of simplex and duplex configurations

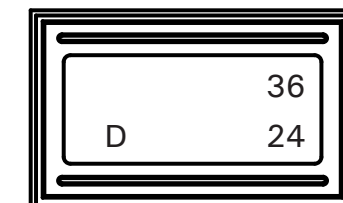
## Simplex Default Display



Displays cycle count

## LCD Menu

## Duplex Default Display



Top right: Pump 1 cycle count  
Bottom right: Pump 2 cycle count

'D' = Duplex Mode: Lead pump alternates based on lead/lag Ratio, but will run both pumps simultaneously in lag condition  
'A' = Alternating Mode: Lead pump alternates based on Lead/Lag Ratio, but pumps will never run simultaneously  
'L' = Lead Mode: Lead pump is set and will always start first. Non-lead pump will start only on a lag condition

Example: Pump 1 logged 36 cycles, Pump 2 logged 24 cycles. Pump 2 will start next, but lead pump will switch after cycle

NOTE: The Pivot Pro display must be unlocked before edits can be made. To unlock, press and hold the BACK and ENTER buttons simultaneously for about 1 second. Locking method can be changed in the 'Lock Set' menu item.

## Other Menu Items

**Alarms:** Displays any existing alarms, if present

**P1/P2 CC:** Displays the cycle count(s)

**P1/P2 ETM:** Displays elapsed time meter(s)

**Lead/Lag (Duplex Only):** Sets the lead:lag alternating ratio or defines the lead pump

**Simplex/Duplex/Alt:** Sets the panel operating mode

Simplex: Only Pump 1 will operate

Duplex: Simultaneous pump operation on Lag float rise

Alt: Active pump will switch on Lag float rise (no simultaneous run)

**3 Floats / 4 Floats:** Sets the number of floats the panel expects

**Reversing:** Activates the reversing functionality and allows for adjustment of additional reversing feature

**OL Alrms:** Activates alarm if physical overload trips (not all panels have overloads)

**Seal Fail:** Dictates whether or not the panel deactivates a pump if seal fail is detected

**Cont Run:** Alarm sounds if any pump run event exceeds timer (20-minute default)

**HOA Set:** Sets the timeout parameters for the HOA switch

5mH = 5-minute (default) limit in HAND Mode before panel reverts to AUTO mode

4hA = 4-hour (default) limit in Service OFF Mode before panel sounds an alarm

**Thermals:** Sets thermal circuit to read as normally open (NO) or normally closed (NC)

**Horn Set:** Sets behavior of audible alarm as Active or Latching

**Globe:** Sets behavior of globe as Solid, Blinking, or Alarm based

**Logic:** Sets panel's behavior to float input

Smart: Attempts to compensates for float issues

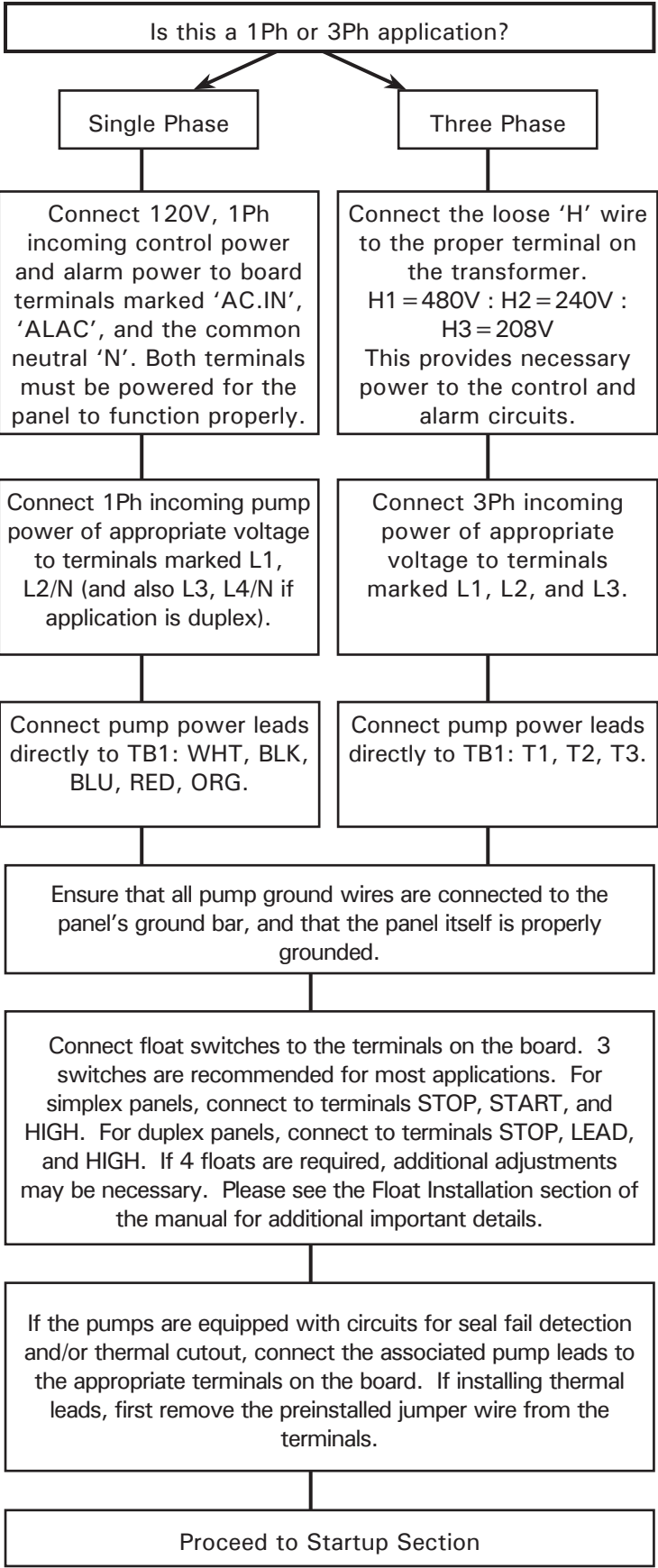
Relay: Responds to floats in conventional "relay-logic" fashion

**Lock Set:** Display securable via 3 ways: 2-Button press (BACK+ENTER), PIN, or USB Key

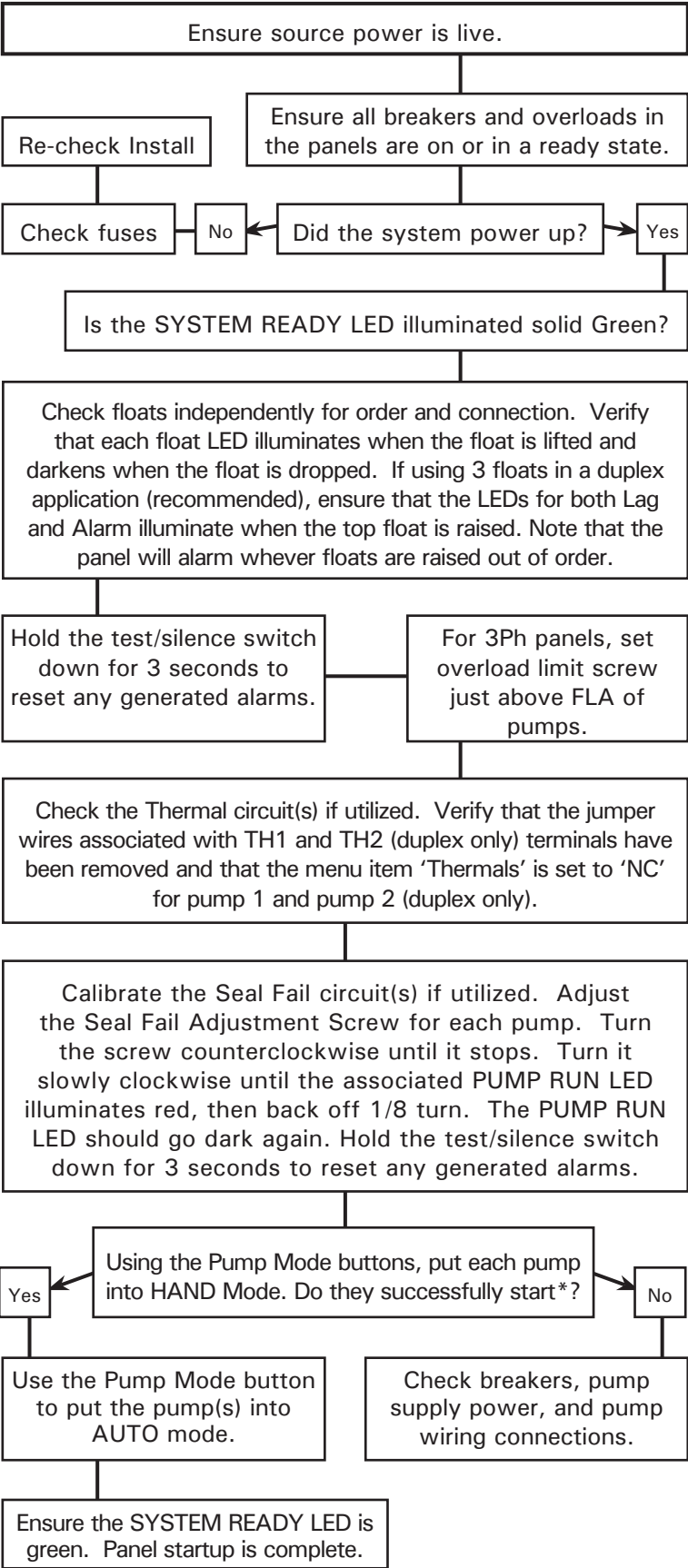
Simplex shown. Two contactors for each reversing pump.

# Installation, Startup, and Troubleshooting Flowchart

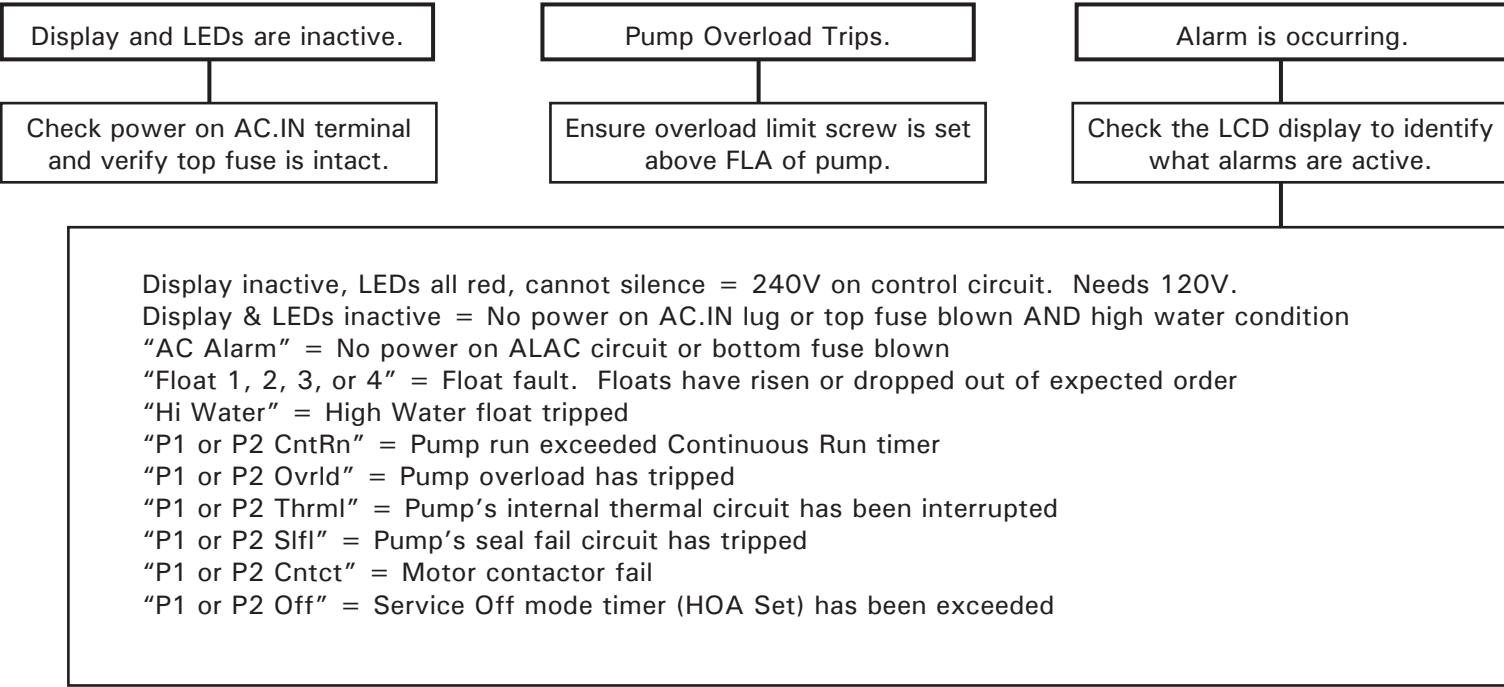
## Install



## Startup



## Troubleshoot



## Alarm Conditions

			User Interface LEDs				
Alarm Condition	Latching	Globe	System Ready	High Water	Pump Run (1 or 2)	Pump Off (1 or 2)	Stop, Start/Lead, or Lag
Overload (3Ph only)	No	Fast Blink	Off	Off	Solid Red	Off	Off
Failed Contactor	Yes	Fast Blink	Off	Off	Solid Red	Off	Off
Service Off Timeout	No	Double Blink	Off	Off	Off	Blinking Red	Off
Disabled Alarm Circuit	No	Double Blink	Off	Solid Red	Off	Off	Solid Red
Continuous Run	Yes	Solid	Off	Off	Blinking Amber	Off	Off
High Water Float Logic Error	Yes	Slow Blink	Off	Blinking Red	Off	Off	Off
Float Logic Error	Yes	Slow Blink	Off	Off	Off	Off	Blinking Red
Float Questionable	Yes	Slow Blink	Off	Off	Off	Off	Blinking Amber
High Water	Yes	Solid	Off	Solid Red	Off	Off	Off
Seal Fail Alarm	Yes	Fast Blink	Off	Off	Blinking Red	Off	Off
Thermal Alarm	Yes	Fast Blink	Off	Off	Blinking Red	Off	Off
High Control Voltage	Yes	Off	Blinking Green	Blinking Red	Blinking Red	Blinking Red	Blinking Red

\* Note: Each reversing pump has two motor contactors. One runs the pump clockwise and the other runs the pump counter-clockwise. The pump will automatically reverse direction on each subsequent cycle when the Reversing option is enabled.

