



ProPak[™] AquaNot[®] Fit 508



ProPak 508-0015 with primary pump M53[®] with Zoeller LED plug shown.
System includes: Model 53, 63, or 98 primary pump with LED plug / Aquanot Fit 508 Z Control enabled controller, Model 508 Aquanot[®], 12 Volt DC backup system with DC pump, check valve, float switch(es) and piping / Plumbed in 1-1/2" (DN40) Sch. 40 PVC pipe.

Battery Backup System

Self-testing, Z Control[®] enabled system provides convenience & confidence in your flood protection



COMPARE	Zoeller Aquanot Fit 508	ProSeries 2400	Liberty Storm Cell
GPM @ 10' @ 12.7 volts	34	23	29
Air lock prevention logic	YES	NO	NO
Built-in logic provides advance warning for many fault conditions	YES	NO	NO
Supervision of 2 independent switches, battery, and charger	YES	NO	NO
Included independent high water sensor that will send alarm and turn on pump in emergency	YES	NO	NO
Detect/Report many more conditions including blocked or frozen pipe	YES	NO	NO
Preassembled combo systems	YES, 3	YES, 3	YES, 1
Built-in Wi-Fi	YES	NO*	YES
Two-way cloud communication with configurable settings	YES	NO	NO
Device sharing with any other Z Control® account	YES	NO	NO
Unlimited notification & maintenance reminders email/text/push	YES	NO	NO
Adjustable self-test schedule	YES	NO	NO
Manufacturer	Zoeller US / Canada	Others China	Others/Liberty US / Taiwan
Price	Lower	Higher	Even Higher

*additional purchase required

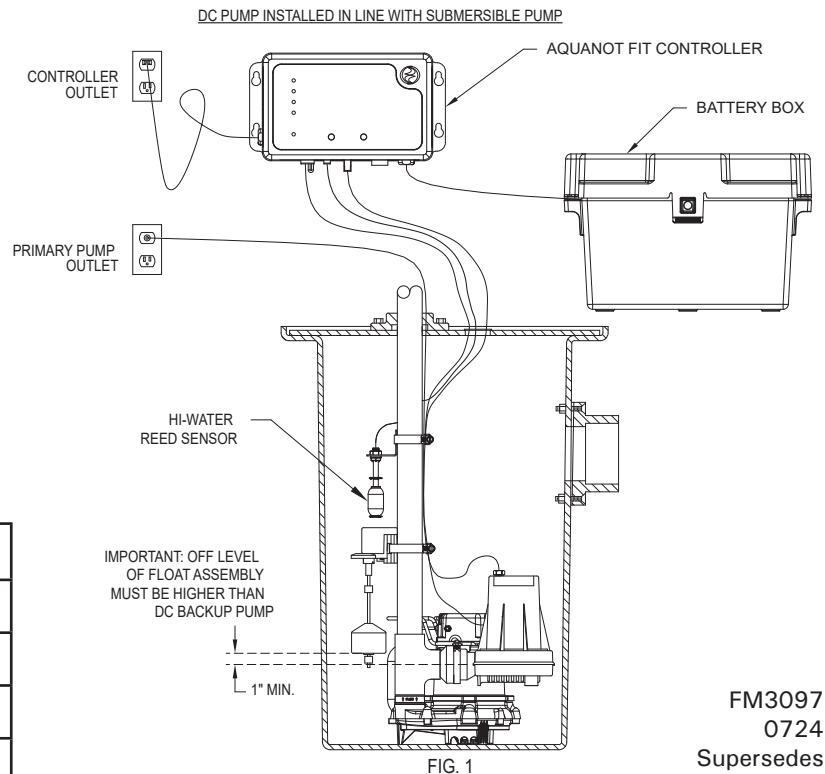
SYSTEMS

Model	System	Warranty
508-0014	Aquanot Fit 508	3 Years
508-0015	Aquanot Fit 508/53® Propak	3 Years
508-0016	Aquanot Fit 508/98 Propak	3 Years
508-0020	Aquanot Fit 508/63 Propak	5 Years

PERFORMANCE

GALLONS PER MINUTE AT 12.7 VOLTS

FEET	METERS	GALLONS	LITERS
5	1.5	41	163
10	3.0	34	132
15	4.6	27	102
26	8.5	SHUT-OFF HEAD	



FM3097
0724
Supersedes
0424

CAUTION All installation of controls, protection devices and wiring should be done by a qualified licensed electrician. All electrical and safety codes should be followed including the most recent National Electrical Code (NEC) and the Occupational Safety and Health Act (OSHA).