

Trusted. Tested. Tough.®

Product information presented here reflects conditions at time of publication. Consult factory regarding discrepancies or inconsistencies.



SECTION: 2.25.052

FM1569

0920

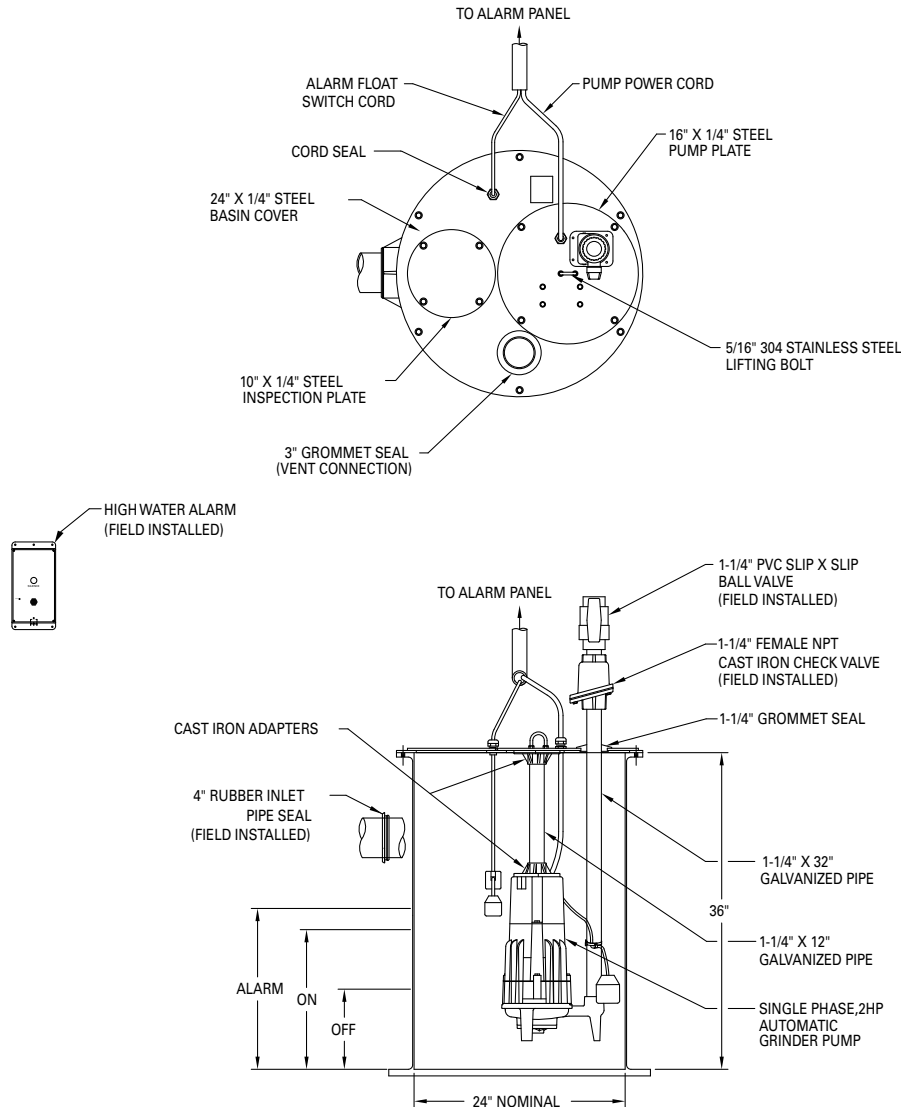
Supersedes

0916

MAIL TO: P.O. BOX 16347 • Louisville, KY 40256-0347
 SHIP TO: 3649 Cane Run Road • Louisville, KY 40211-1961
 TEL: (502) 778-2731 • 1 (800) 928-PUMP • FAX: (502) 774-3624

Visit our website:
 zoellerpumps.com

SIMPLEX 820 GRINDER SYSTEM P/N 922-0009 INDOOR PREPACKAGED



Note: All variable level float switches in this section are mechanically activated and do not contain mercury.

SK1691

Complete System As Shown Above (P/N 922-0009) Includes:

Qty.	Part No.	Description
1	820-0011	230 Volt, 1 Ph, 2 HP Automatic 820 Grinder Pump
1	10-4012	Indoor Alarm
1	10-0689	Weight Assembly
1	32-0011	Basin Assembly - 24" X 36"

Approximate Weight: 184 lbs.