

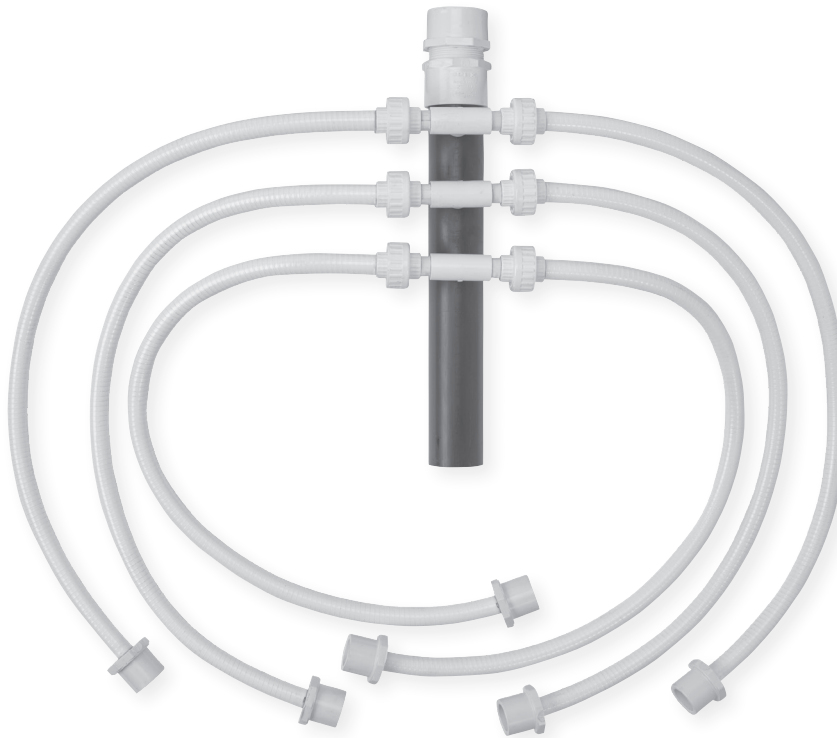
Product information presented here reflects conditions at time of publication. Consult factory regarding discrepancies or inconsistencies.

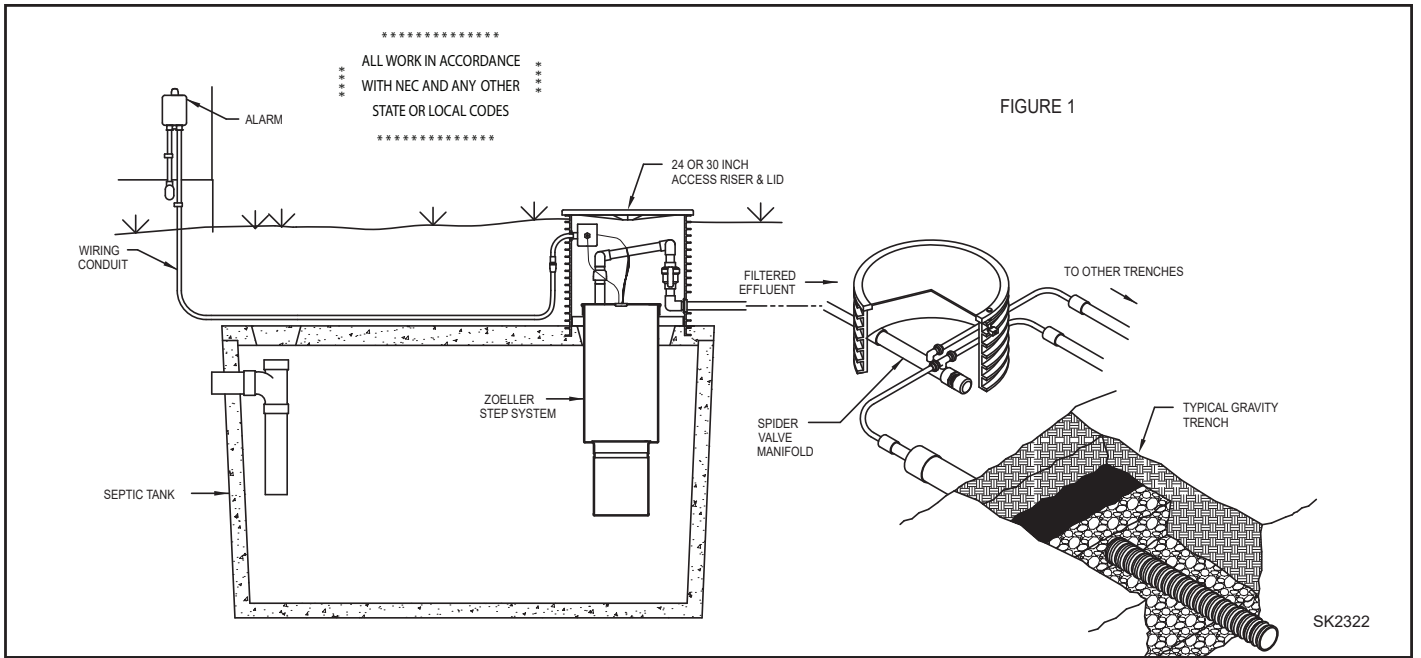
## Technical Data

### Pressure Manifold Valve Assembly

#### Features

- Pressurized splitting to a gravity disposal field
- 3 feet of 1/2" diameter PVC flexible pipe on each discharge for ease of assembly
- 2" diameter SCH 80 PVC manifold with cleanout for equal pressurization and easy maintenance
- Models available with 2 outlets up to 10 outlets (6 outlet shown)
- Standard 5/32" orifices can be custom drilled in the field to accommodate laterals of different lengths
- Orifice sizing program available
- Fits in a 24" diameter access riser
- Compatible with conventional lateral trenches and chamber systems





Distal Pressure		Flow (GPM) per Orifice							
Feet*	psi	5/32"	3/16"	7/32"	1/4"	9/32"	5/16"	11/32"	3/8"
3	1.30	0.52	0.75	1.03	1.34	1.70	2.09	2.53	3.01
4	1.73	0.60	0.87	1.18	1.55	1.96	2.42	2.92	3.48
5	2.16	0.68	0.97	1.32	1.73	2.19	2.70	3.27	3.89
6	2.60	0.74	1.07	1.45	1.89	2.40	2.96	3.58	4.26

\* The Distal Pressure selected will need to be added to the friction head and static head for the TDH.

Spider Valve® "Pressure Manifold" CL0405	
Part Number	Description
5051-0030	2-Outlet pressure manifold assembly w/ 5/32" ID washers and unions
5051-0031	3-Outlet pressure manifold assembly w/ 5/32" ID washers and unions
5051-0032	4-Outlet pressure manifold assembly w/ 5/32" ID washers and unions
5051-0033	5-Outlet pressure manifold assembly w/ 5/32" ID washers and unions
5051-0034	6-Outlet pressure manifold assembly w/ 5/32" ID washers and unions
5051-0035	7-Outlet pressure manifold assembly w/ 5/32" ID washers and unions
5051-0036	8-Outlet pressure manifold assembly w/ 5/32" ID washers and unions
5051-0037	9-Outlet pressure manifold assembly w/ 5/32" ID washers and unions
5051-0038	10-Outlet pressure manifold assembly w/ 5/32" ID washers and unions

NOTE: For sizing help please consult Zoeller Pump Company at 1-800-928-7867 or use the Spider Valve® Orifice Sizing Tool to help design your onsite system at zoellerpumps.com