

Trusted. Tested. Tough.®



FM3581
0526
Supersedes
0426

MAIL TO: P.O. BOX 16347 • Louisville, KY 40256-0347
SHIP TO: 3649 Cane Run Road • Louisville, KY 40211-1961
Tel: (502) 778-2731 • 1 (800) 928-PUMP

Visit our website:
zoellerpumps.com

Product information presented here reflects conditions at time of publication. Consult factory regarding discrepancies or inconsistencies.

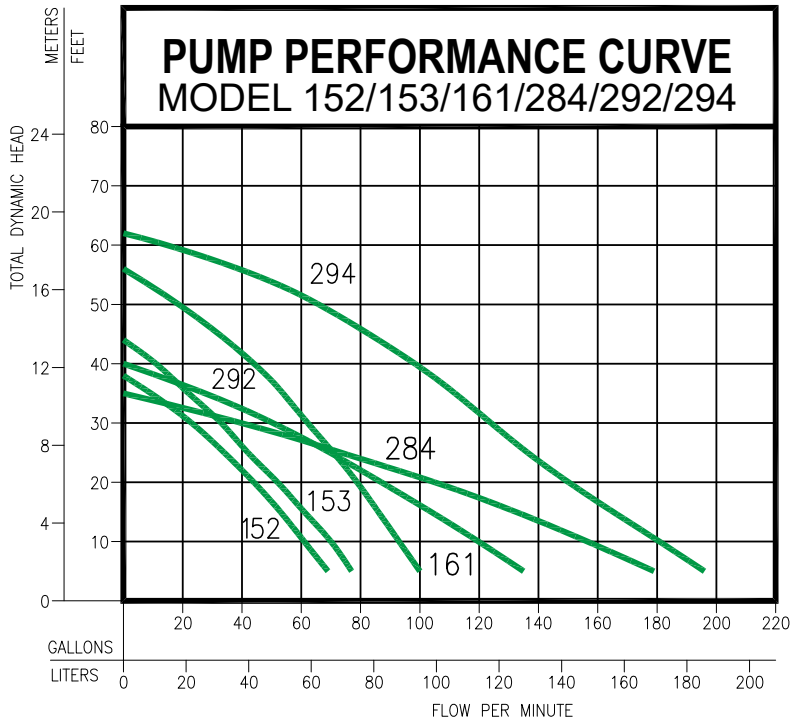
945 TRACTION GUARD™ SUBMITTAL

	PUMP MODEL	152	153	161	284	292	294
MOTOR	Horsepower	4/10	1/2	1/2	1	1/2	1-1/2
	Hertz	60	60	60	60	60	60
	RPM	3450	3450	3450	1750	3450	3450
	Insulation	Class B	Class B	Class B	Class B	Class B	Class F
	Cooling	Oil Filled					
PUMP	Discharge	1-1/2"	1-1/2"	1-1/2"	2"	2"	2"
	Solids Handling	3/4"	3/4"	3/4"	2"	2"	2"
	Cord Length	25'*	25'*	25'*	25'	25'*	25'
	Cord Type	SOW/SOOW					
	Max Operating Temperature	130°F					
MATERIALS	Cap	Cast Iron					
	Motor Housing	Cast Iron					
	Pump Housing	Cast Iron					
	Base	Cast Iron					
	Upper Bearing	Sleeve Bearing		Ball Bearing			
	Lower Bearing	Ball Bearing					
	Mechanical Seal	Carbon and Ceramic					
	Impeller	Cast Iron Vortex					
	Hardware	Stainless Steel					
	Motor Shaft	AISI 1215 Steel		1117 Carbon Steel			
Gasket	Neoprene						

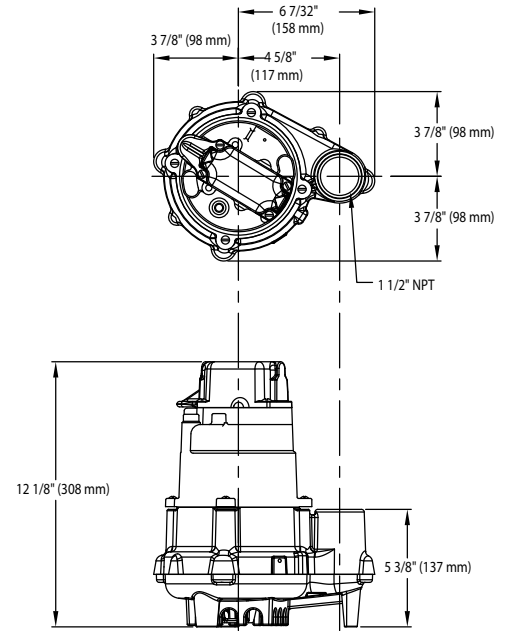
*Optional 6' cord only available for 115V units. Meets ASME 17.1 code.

» MODEL COMPARISON

MODEL	115V/1Ph	200V/1Ph	230V/1Ph	200V/3Ph	230V/3Ph	460V/3Ph
	FLA	FLA	FLA	FLA	FLA	FLA
152	8.5	N/A	4.3	N/A	N/A	N/A
153	10.5	N/A	5.3	N/A	N/A	N/A
161	15.0	8.8	7.5	6.4	5.2	2.9
284	N/A	9.3	8.9	5.5	5.0	2.6
292	15.0	8.8	7.5	6.4	5.2	2.9
294	N/A	17.8	13.7	10.8	9.5	4.8



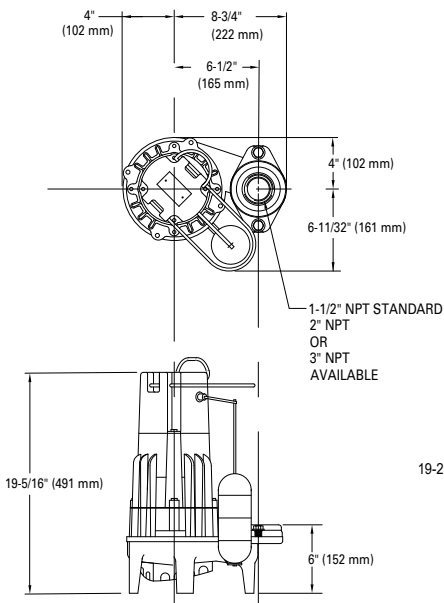
PUMP MODEL 152/153



SK2064

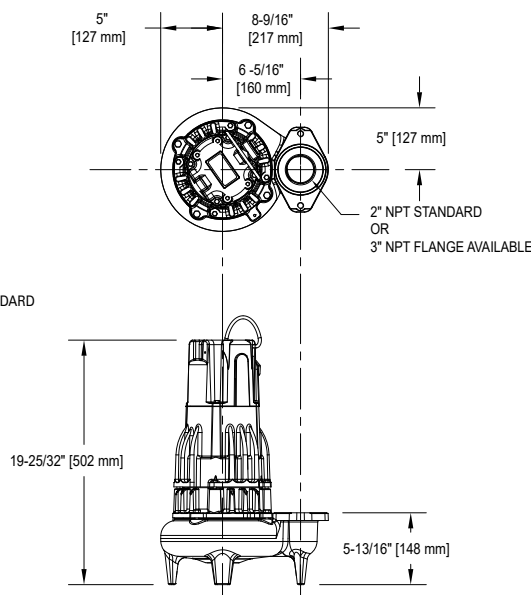
159788

PUMP MODEL 161



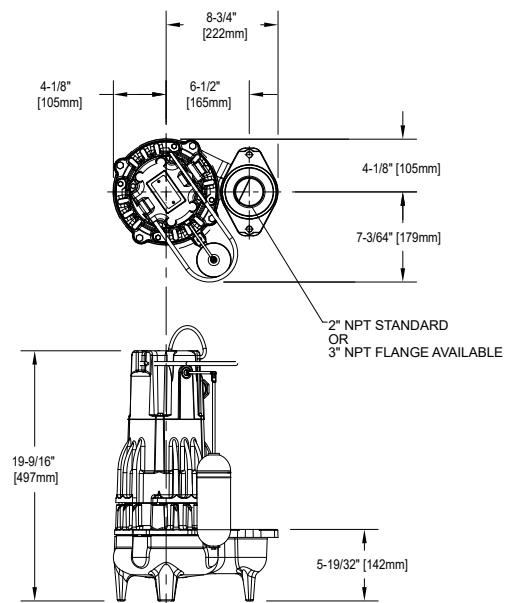
SK374

PUMP MODEL 284



SK1023

PUMP MODEL 292/294



SK863

» 1 PHASE TRACTION GUARD SYSTEM PANEL

The Zoeller Pivot RL is a dependable, user-friendly control panel designed to keep elevator sump pumps running smoothly. It provides clear visual and audible alerts to ensure issues like rising water levels are caught early, helping maintain a safe and dry elevator environment. With simple status indicators, and built-in alarm functions, it offers a practical and reliable solution for building teams who want straightforward monitoring without complexity.

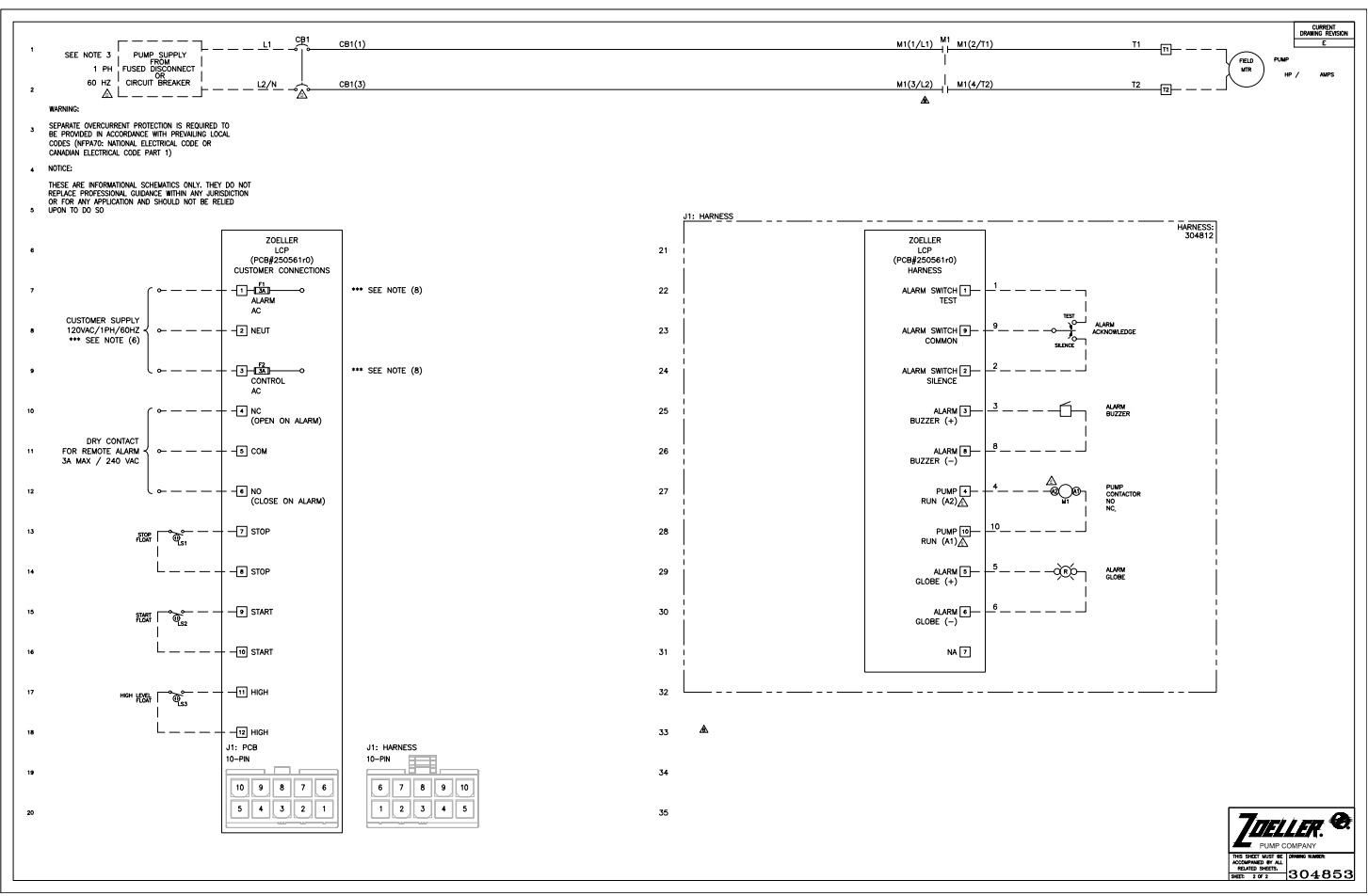
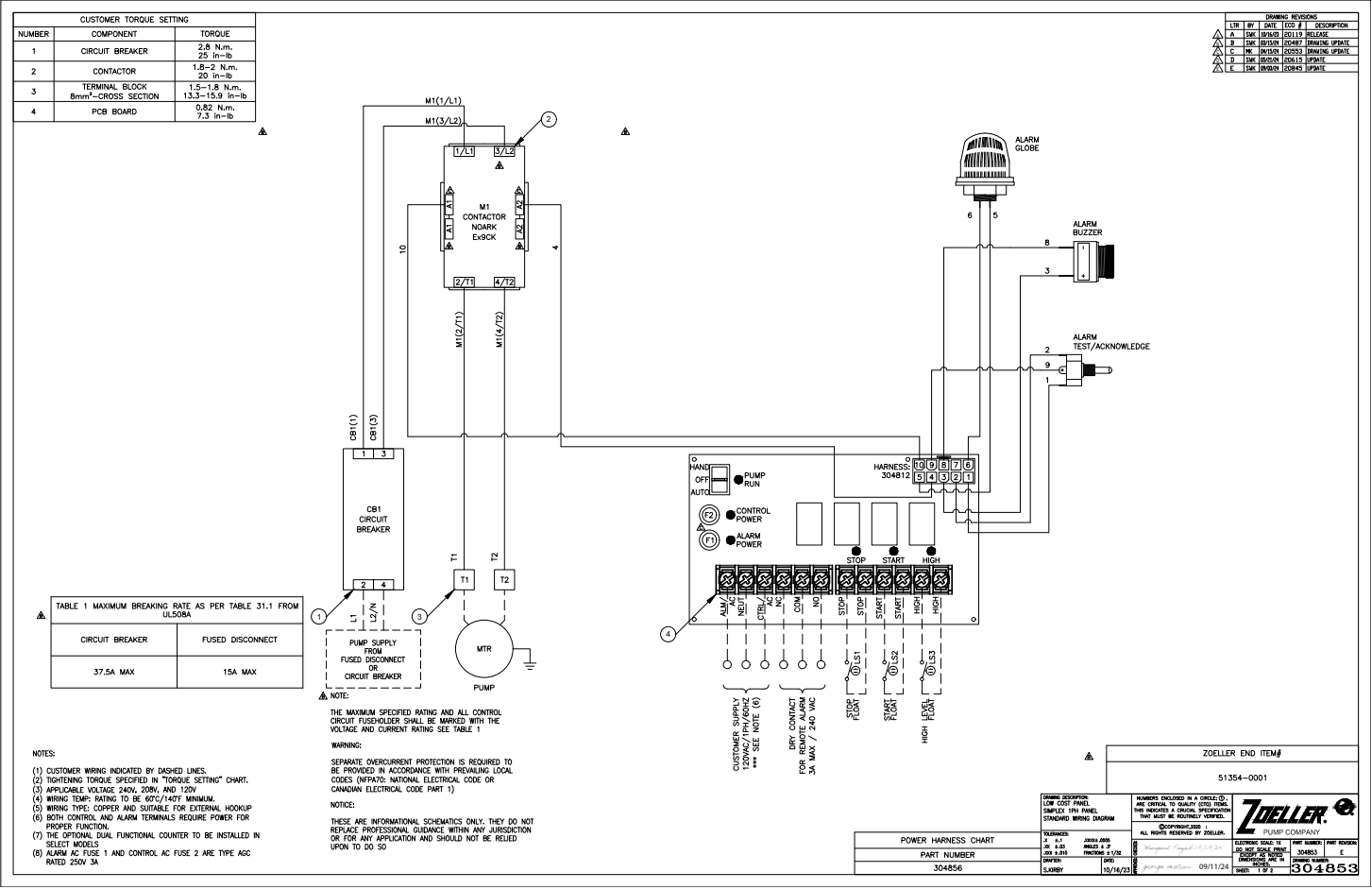
FEATURES

- Simplex control panel designed to operate one pump.
- Supports single-phase pumps at 115 / 208 / 240 volts, rated up to 20 FLA.
- NEMA 4X enclosure suitable for indoor or outdoor environments.
- Basic LED indicators for:
 - Float switch status (Red/Amber/Green LEDs)
 - Pump Run
 - High Water
 - System Ready
 - HOA (Hand/Off/Auto) mode
- Audible alarm and visual alarm beacon for high-water conditions.
- Test/Silence switch for alarm and indicator testing.
- Dry contact outputs (NO/NC) for external alarms or building management systems.
- Pump circuit breaker and clearly labeled terminal blocks for wiring.
- Hand/Off/Auto (HOA) switch for manual or automatic operation.



MODEL	PUMP FULL LOAD AMP RATING
51354-0001	0 – 20 FLA





» 3 PHASE TRACTION GUARD SYSTEM PANEL

The Zoeller Pivot Pro 3-Phase panel delivers a higher level of protection, intelligence, and reliability for demanding elevator sump applications. Its user friendly LCD interface and built-in alarm features make system status easy to understand at a glance, while advanced onboard logic helps detect issues early keeping pumps running even when a component or float begins to fail. Designed for environments where uptime matters, the Pivot Pro provides peace of mind through smarter monitoring, dependable redundancy support, and durable construction suited for challenging conditions. This makes it an excellent fit for traction elevator systems that require a more robust, worry free control solution.

FEATURES

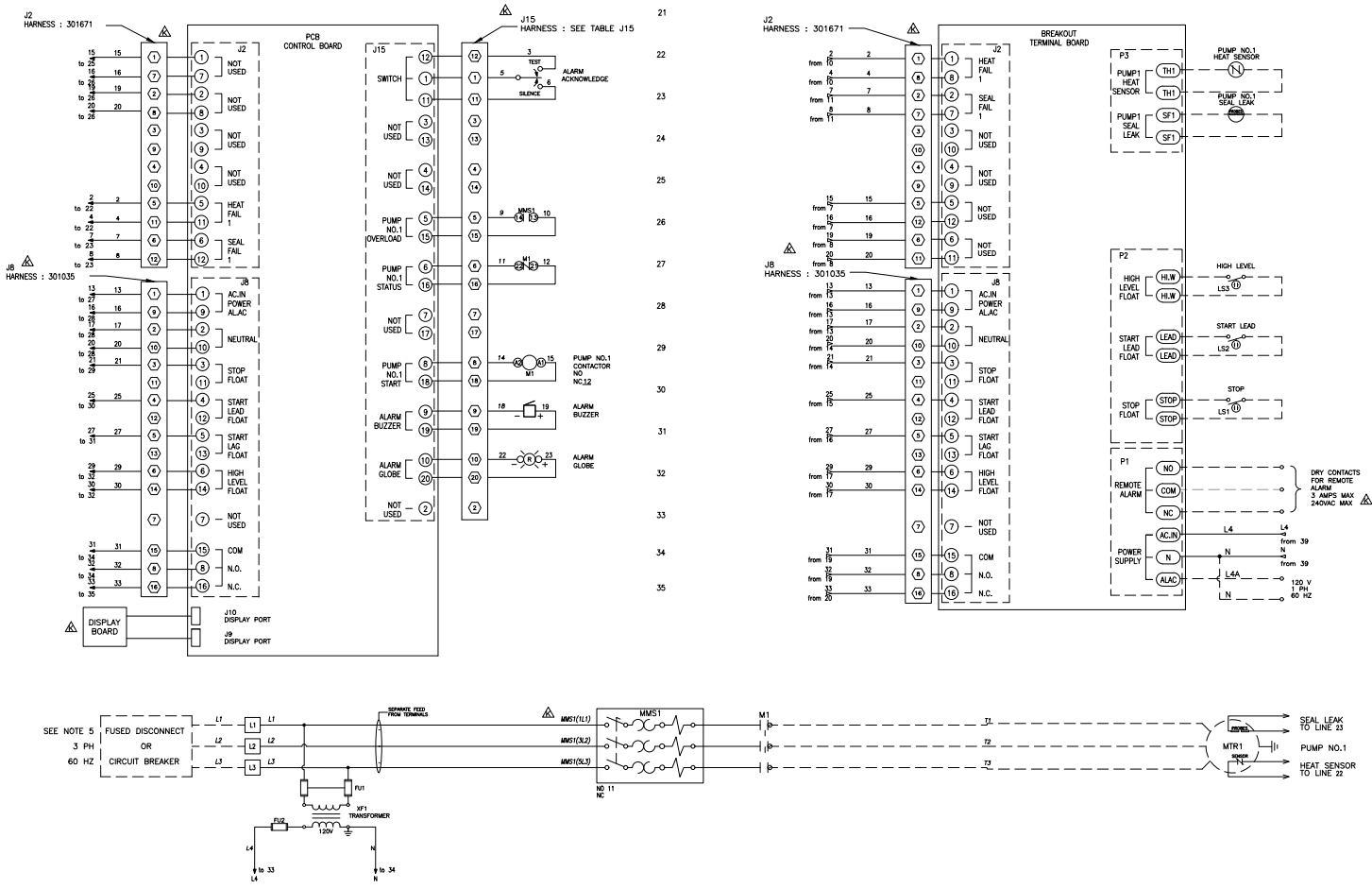
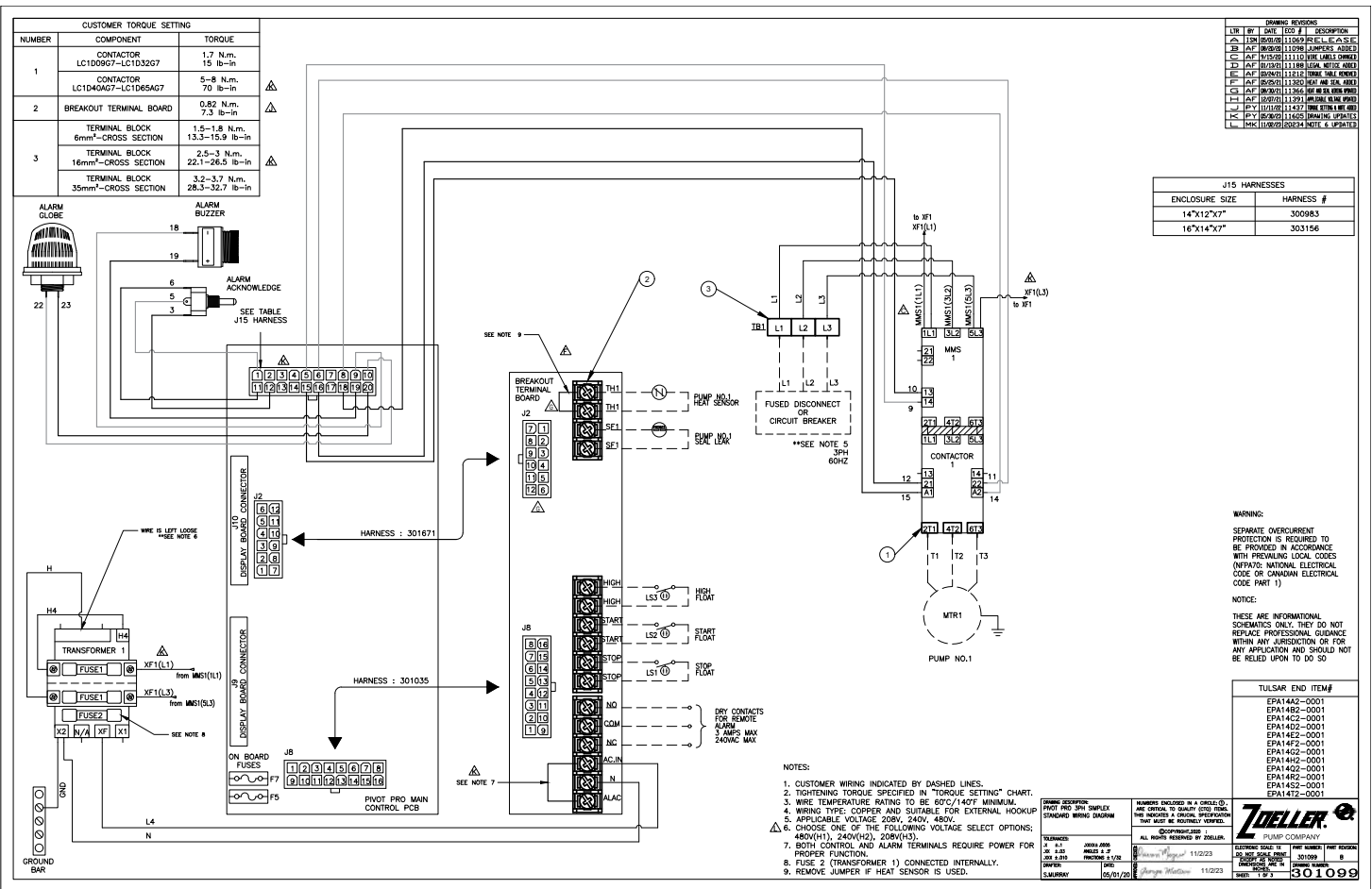
- RED/AMBER/GREEN LEDs for float switch indicators, Pump Run, High Water, System Ready, and HOA functions
- TEST toggle will check all LEDs, globe, and horn
- Elapsed time and cycle counts via USB port & LCD
- Z Control® enabled (requires Wi-Fi Gateway 90002-0001)
 - Connecting to the Z Control® Cloud allows remote access to view equipment status and adjust settings
 - Configure alert settings for nearly instant email, text, and push notifications of changing conditions
 - Free access to the Z Control® Cloud
 - Easy setup and use
 - Leverage this technology to reduce/eliminate unnecessary site trips and provide real-time peace of mind
- Lockable LCD menu allows for easy access to status, counters, and settings
- Adjustable settings (see Installation Instructions)
- 'Smart' or 'Standard' float logic (Smart logic will compensate for bad floats. Standard logic will operate like traditional panels.)
- CONTINUOUS RUN alarm: 20 minute default
- Smart HOA timer prevents pump damage caused by accidental "ON" - Smart HOA includes a Service OFF reminder alarm



MODEL	PUMP FULL LOAD AMP RATING
114C4-0001	2.5 - 4.0
114D4-0001	4.0 - 6.3
114E4-0001	6.0 - 10.0
114F4-0001	9.0 - 14.0



Optional Z Control (90002-0001)



» FLOAT SWITCH (REQUIRES 3) - 10-1877

The narrow angle level control float are used to monitor liquid level conditions and activate control panels or alarms. The variable level control switch is normally open when hanging vertically above the liquid level. The switch should be mounted to the discharge pipe or float tree using a stainless-steel pipe clamp and plastic clip. This connection gives the float a pivot point when the water level rises in the basin. When the water level rises and the switch is raised a few degrees above the horizontal position the switch closes, completing the circuit to the control panel or alarm. The float that encases the mechanical switch is constructed of durable PVC/polypropylene.

FEATURES

- Float is constructed of impact-resistant and non-corrodible PVC/polypropylene encasing.
- Standard mechanical variable level control switches are rated for 115/230V, 5 amps.
- 18/2 Type SJOW CPE Cord-Standard
- Cords available in 25' lengths
- Temperature rating of 140 °F (60 °C) , 10-4849 high temp 180 °F(82 °C)
- Approximately 1/2" liquid level differential in switching action
- HOUSING: 1 lb. 12 oz., 2.8" x 3.3"
- CLIP - Injection-molded acetal plastic



