

MAIL TO: P.O. BOX 16347 • Louisville, KY 40256-0347
SHIP TO: 3649 Cane Run Road • Louisville, KY 40211-1961
Tel: (502) 778-2731 • 1 (800) 928-PUMP

Visit our website:
zoellerpumps.com

Product information presented here reflects conditions at time of publication. Consult factory regarding discrepancies or inconsistencies.

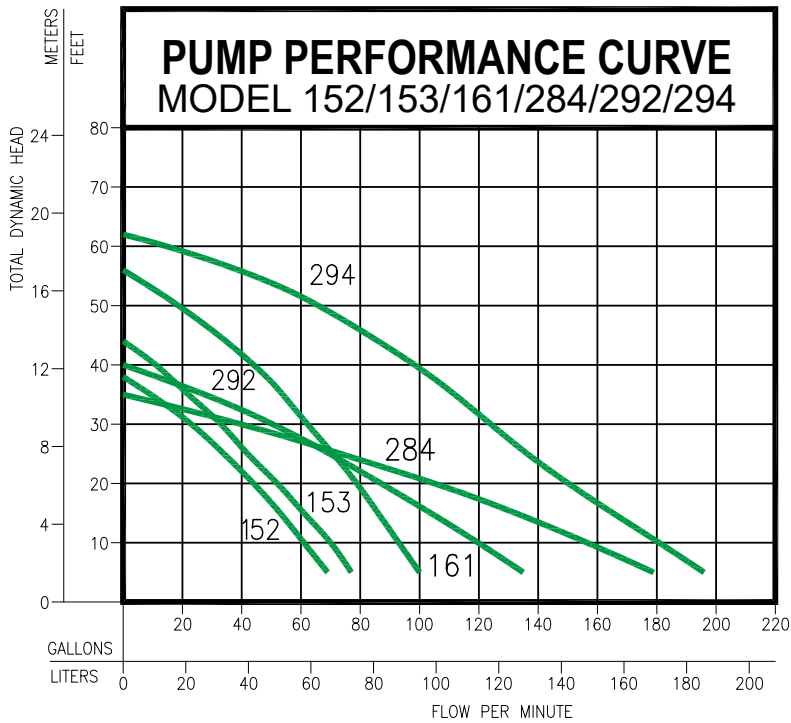
942 OIL GUARD® SEPARATOR

SUBMITTAL

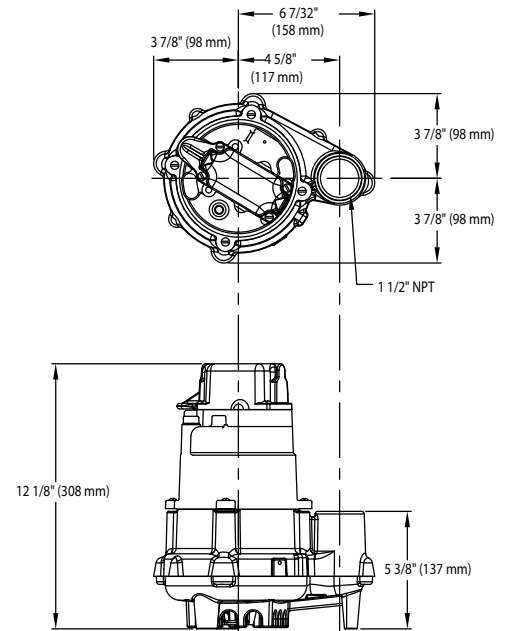
	PUMP MODEL	152	153	161	284	292	294	
MOTOR	Horsepower	4/10	1/2	1/2	1	1/2	1-1/2	
	Hertz	60	60	60	60	60	60	
	RPM	3450	3450	3450	1750	3450	3450	
	Insulation	Class B	Class B	Class B	Class B	Class B	Class F	
	Cooling	Oil Filled						
PUMP	Discharge	1-1/2"	1-1/2"	1-1/2"	2"	2"	2"	
	Solids Handling	3/4"	3/4"	3/4"	2"	2"	2"	
	Cord Length	25'	25'	25'	25'	25'	25'	
	Cord Type	SOW/SOOW						
	Max Operating Temperature	130°F						
MATERIALS	Cap	Cast Iron						
	Motor Housing	Cast Iron						
	Pump Housing	Cast Iron						
	Base	Cast Iron						
	Upper Bearing	Sleeve Bearing			Ball Bearing			
	Lower Bearing	Ball Bearing						
	Mechanical Seal	Carbon and Ceramic						
	Impeller	Plastic	Plastic	Cast Iron Vortex	Cast Iron Vortex	Cast Iron Vortex	Cast Iron Vortex	
	Hardware	Stainless Steel						
	Motor Shaft	AISI 1215 Steel			1117 Carbon Steel			
	Gasket	Neoprene						

» MODEL COMPARISON

MODEL	115V/1Ph	200V/1Ph	230V/1Ph
	FLA	FLA	FLA
152	8.5	N/A	4.3
153	10.5	N/A	5.3
161	15.0	8.8	7.5
284	N/A	9.3	8.9
292	15.0	8.8	7.5
294	N/A	N/A	13.7



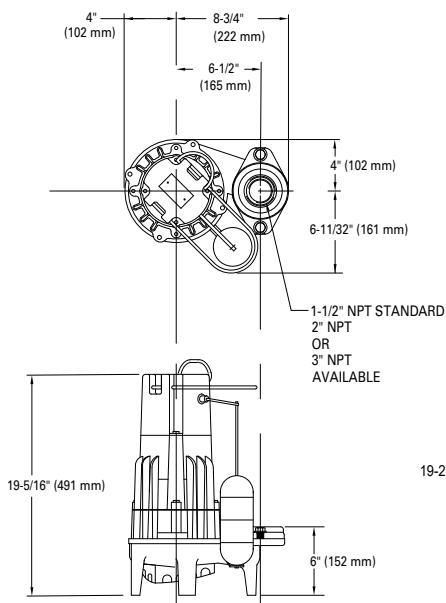
PUMP MODEL 152/153



SK2064

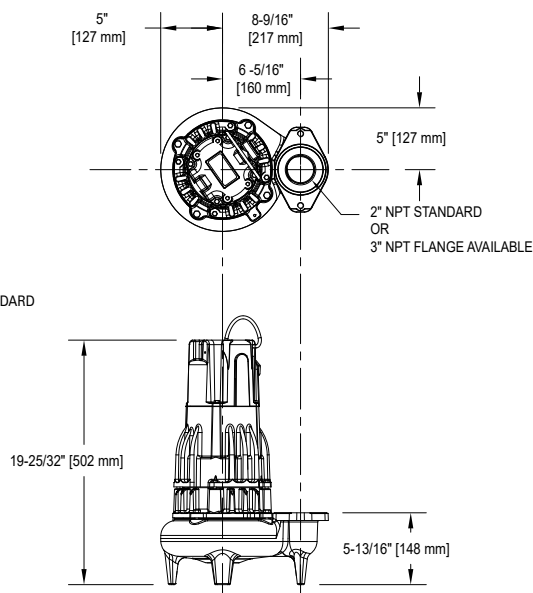
159788

PUMP MODEL 161



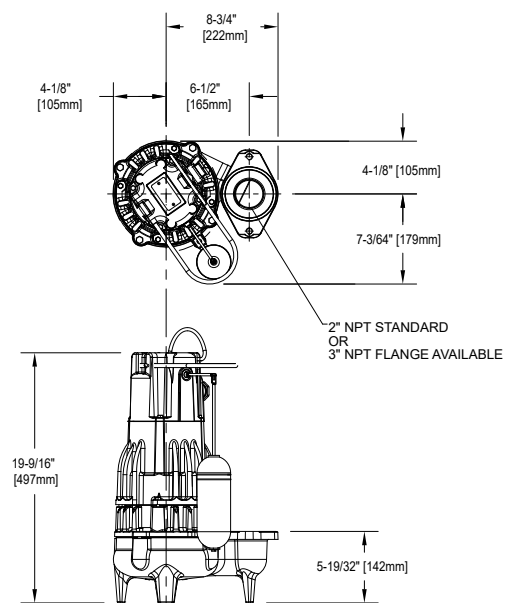
SK374

PUMP MODEL 284



SK1023

PUMP MODEL 292/294



SK863

» OIL GUARD® SEPARATOR PANEL

Liquid Smart® Pump Panels are designed to meet industrial and elevator code special applications that require the responsible removal of oil and water. The systems are setup to automatically pump water to the normal discharge area and pump oil to a secondary containment area.

FEATURES

- UL Listed for the United States and Canada
- NEMA 4X polycarbonate enclosure with lockable latches
- Pump control visible indicators: pump #1 hand-off-auto (H.O.A.) switch, green pump run light and green power on light
- Alarm visible indicators: red beacon alarm light, yellow light for oil, white light for water, alarm test and silence buttons
- Alarm horn sounds at 85 decibels at 10'
- Complete panel remote monitoring dry contacts: oil, water, high liquid

APPLICATIONS

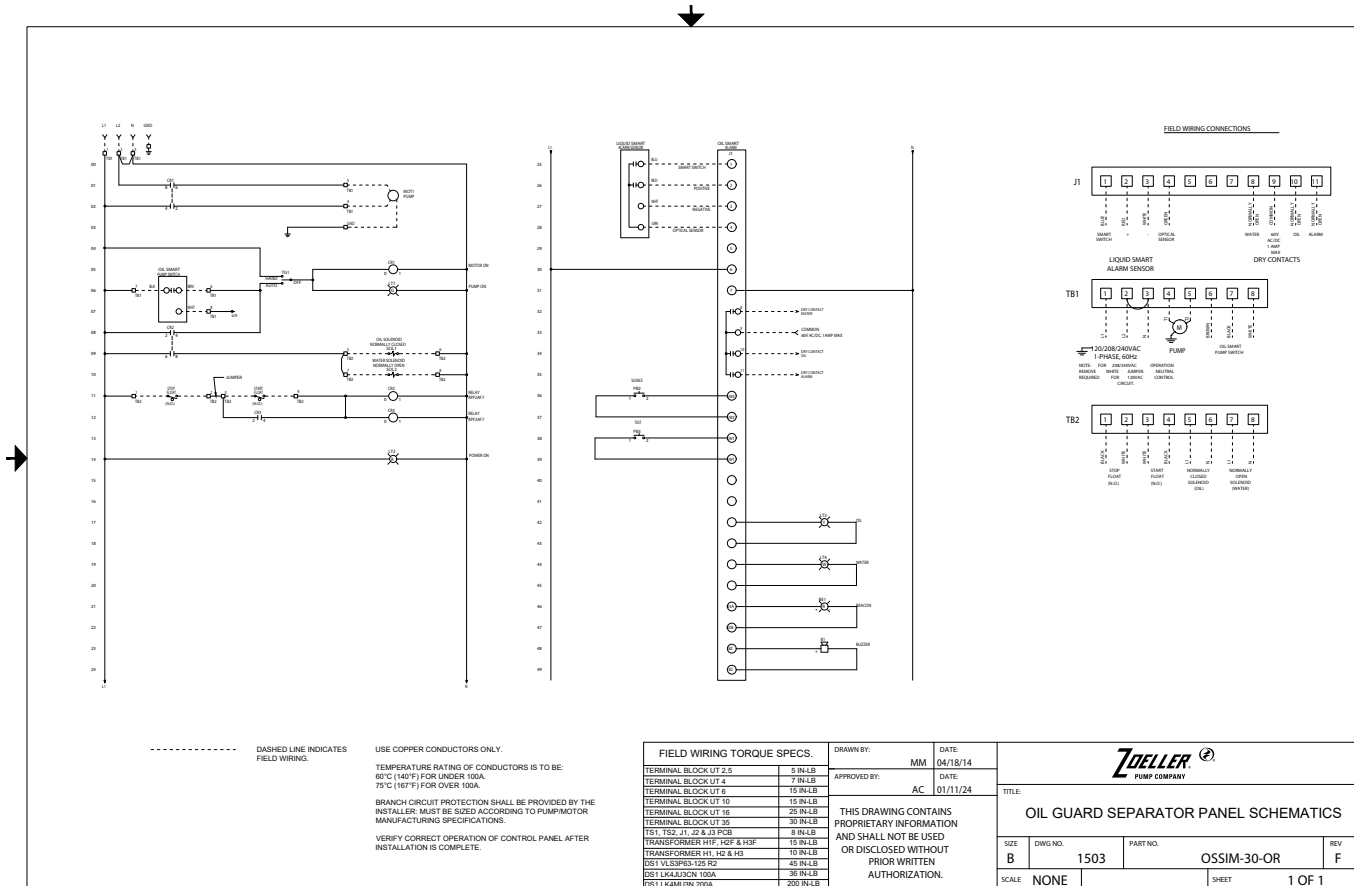
- Elevator sumps
- Electric utilities (Substations, power plants, underground vaults, and transformer barriers)
- Manufacturing facilities
- Any application where there is a need to remove water while containing oil



SIMPLEX SINGLE PHASE

MODEL	PUMP FULL LOAD AMP RATING
10-5851	0-16.0 FLA

OIL GUARD SEPARATOR PANEL SCHEMATICS



» OIL CONTAINMENT TANK ALARM

The Oil Containment Tank Alarm is a plug-and-play alarm that will alarm when oil levels reach the top of the containment tank. When tied back to the separator panel will shut the pump off to prevent overfilling.

FEATURES

- Plug-and-play for easy installation, 120VAC
- Includes Oil Guard® high liquid alarm with 10' power cord and Liquid Smart® Alarm Sensor with 20' cord
- Pump control and alarm components differentiate between oil and water
- Alarm visible indicators: Red beacon alarm light, yellow light for oil, white light for water, alarm test and silence buttons
- Alarm horn sounds at 85 decibels at 10'
- Remote monitoring dry contacts: Oil, Water, and High Liquid Alarm
- UL listed for the United States and Canada



APPLICATIONS

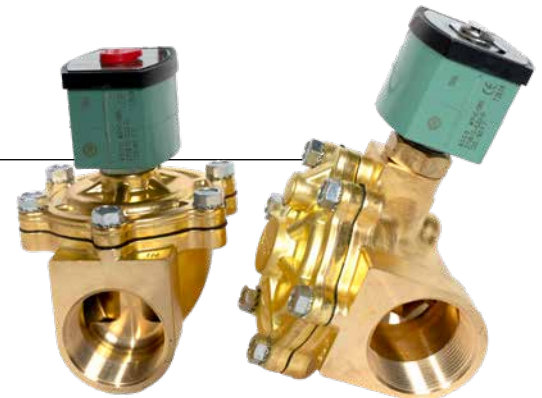
- Elevator sumps
- Electric utilities (Substations, power plants, underground vaults, and transformer barriers)
- Manufacturing facilities
- Any application where there is a need to remove water while containing oil

SIMPLEX SINGLE PHASE: 120VAC

MODEL	PUMP FULL LOAD AMP RATING
10-1526	0-16.0 FLA

» SOLENOID VALVES

	1-1/2"	2"
Normally Open	30-0265	30-0267
Normally Closed	30-0264	30-0266



» FIBERGLASS CONTAINMENT TANK

INCLUDES:

- 24" x 36" Fiberglass basin, 70 gallon capacity
- Solid fiberglass cover
- 1-1/2" and 2" pipe seal, field install depending on discharge pipe size



005882

005588



31-3382